

European Competition  
for Towns and Villages

Šmarješke Toplice, Slovenia, 30. 6. 2016



Občina  
Šmarješke Toplice

# Šmarješke Toplice

»Vir življenjske energije«

»Spring of Life Energy«



## Kazalo

Nagovor županje	3
Šmarješke Toplice - »Vir življenjske energije«	4
Načrtovani / razvojni pristop	6
Naravno okolje	8
Grajeno okolje	10
Pokrajina	11
Odprti zeleni prostori	13
Trajni nasadi	15
Sezonski nasadi	16
Trud in udeležенost	17
Turizem in prosti čas	18
Terme Šmarješke Toplice	20
Osnovna šola Šmarjeta in Vrtec Sonček	21
Podjetje Plastoform – največje podjetje v Občini Šmarješke Toplice	22
Pot obiska kraja Šmarješke Toplice	23



Občina Šmarješke Toplice /  
The Municipality of Šmarješke Toplice  
Šmarjeta 66, SI8220 Šmarješke Toplice  
TELEFON / TELEPHONE: 00386 (0)7 38 44 330  
E – POŠTA / E-MAIL: info@smarjeske-toplice.si

ZALOŽILA IN IZDAJA / PUBLISHED BY:  
The Municipality of Šmarješke Toplice  
BESEDILO / TEXT: The Municipality of Šmarješke Toplice  
LEKTURA / PROOFREADING: Kristina Ščuka and Mojca Pacek  
PREVOD / TRANSLATION: Yurena d.o.o.  
FOTOGRAFIJE / PHOTOS: Občina Šmarješke Toplice  
OBLIKOVANJE IN TISK / DESIGN AND PRINT:  
Tomograf Tomo Cesar, s. p.

Publikacija je bila izdana v sklopu  
promocijskega gradiva za tekmovanje  
Entente Florale Europe 2016. /  
This publication was published as part of  
the promotional material for the competition  
Entente Florale Europe 2016.



## Table of contents

Foreword by the mayor	3
Šmarješke Toplice - »The spring of life energy«	4
The planned development approach	6
The natural environment	8
The built environment	10
The landscape	11
Open green spaces	13
Perennial plants	15
Seasonal plants	16
The invested effort and participation	17
Tourism and leisure	18
The Šmarješke Toplice Thermal SPA	20
The Šmarjeta Primary school and The Sonček Kindergarten	21
Plastoform – the largest company in the Municipality of Šmarješke Toplice	22
Travel path of Šmarješke Toplice	23



## Nagovor županje

Občina Šmarješke Toplice sodi med manjše slovenske občine po številu prebivalcev in površini, med velike pa po hitrem razvoju (odcepitev od Mestne občine Novo mesto v letu 2007) in velikih projektih, ki so že bili izvedeni, so v procesu izvajanja ali v načrtih razvojnih programov.

Znano je, da smo turistična občina, saj imamo za to izredne naravne danosti. Poleg termalne vode tudi največje zajetje pitne vode na Dolenjskem in neokrnjeno naravo z raznolikim rastlinskim in živalskim svetom ter bogato kulturno dediščino. Nimamo »umazane industrije«, naš paradni konj je zdravilišče Terme Šmarješke Toplice v zeleni oazi šmarjeških gozdov. V sled trajnostnega razvoja občine temelji tudi naš nadaljnji razvoj na vseh področjih, od infrastrukturnih projektov do novega kompleksa visokokakovostnega turizma v Klevevžu, ki bo zagotavljal vsaj 200 novih delovnih mest.

Velik poudarek posvečamo vzgoji in izobraževanju, medgeneracijskemu druženju ter ohranjanju kulturne dediščine. Naše bogato kulturno in športno dogajanje v občini temelji na prostovoljnem delu številnih aktivno delujočih društev.

Veselimo se vašega obiska v Občini Šmarješke Toplice, kjer vam bomo dokazali, da smo dobra ekipa in skupaj ustvarjamo odlične pogoje za čim boljše življenjsko okolje naših občanov in turistov ter sledimo našemu sloganu Občina Šmarješke Toplice – »Vir življenjske energije«.

Dobrodošli v Šmarjeških Toplicah!

**mag. Bernardka Krnc, županja**

## Foreword by the mayor

The municipality of Šmarješke Toplice is among the smallest municipalities in the country in terms of population and surface area, but quite substantial when it comes to its rapid development (secession from the town municipality of Novo mesto in 2007) and large projects that have already been carried out, are being undertaken or are in the planning stages.

We are well known for being a tourism-oriented municipality with excellent natural conditions. In addition to thermal water, the municipality has the largest drinking water reservoir in Dolenjska as well as pristine nature with diverse flora and fauna and a rich cultural heritage. We do not have any "dirty industry"; our main showpiece is the Šmarješke Toplice Thermal Spa located in a green oasis of the local woodland. The future progress of the municipality will be based on the principles of sustainable development, guiding us in all future endeavours, such as new infrastructure projects and setting up a new premium tourist complex in Klevevž, which will create at least 200 new jobs.

A lot of emphasis is placed on education, intergenerational socializing and the preservation of our cultural heritage. The lively cultural and sporting activities in our municipality are largely based on the voluntary work of numerous clubs and societies.

We are looking forward to your visit in Šmarješke Toplice, which will give us a chance to prove we make a good team in creating the best possible living conditions for our residents and tourists while pursuing our slogan "The Municipality of Šmarješke Toplice – A Spring of Life Energy".

Welcome to Šmarješke Toplice!

**Mayor Bernardka Krnc, M.Sc.Econ**

## Šmarješke Toplice - »Vir življenjske energije«

Voda, ustrezna lega in dobri življenjski pogoji so pripomogli, da so območje današnje občine Šmarješke Toplice poselili prvi prebivalci. Za prvimi staroselci so se skozi različna časovna obdobja tu ustalili tudi Kelti in Rimljani. V času preseljevanja ljudstev so naše kraje odkrili in naselili Slovani. Različne kulture so pustile svoj pečat v kraju in tako se bogata kulturna in zgodovinska dediščina razkriva v arheoloških najdbah ter v raznovrstni sakralni in etnološki dediščini. Uradni zapisi s prvo omembo današnjega področja občine segajo v leto 1074, ko je bila sestavljena pogodba med freisingškim škofom in oglejskim patriarhom o lastništvu kmetijskih gospodarstev na pobočju Vinjega vrha.

Kar tretjino območja občine predstavlja varovana kulturna dediščina. Precejšen del občine je varovan tudi z Natura 2000. Zato se zavedamo izrednega pomena ohranjanja naravne in kulturne dediščine, ki jo združujemo v tematsko vodeni poti »Vir življenjske energije«. Na ta način dediščino predstavljamo širšemu krogu obiskovalcev.

Varovana območja naravne in kulturne dediščine nam ne predstavljajo omejitev, temveč veliko prednost, saj v tem vidimo svetlo prihodnost za nadaljnji prostorski razvoj, ki temelji na trajnostnem razvoju.

Šmarješke Toplice v širšem slovenskem in evropskem prostoru slovijo po inovativnem zdraviliškem turizmu, ki se je razvilo v najsodobnejše termalno središče. Naravne danosti nudijo pestro ponudbo športnih aktivnosti na prostem in doživetij v neposrednem stiku z naravo.

Območje današnje občine je v preteklosti veljalo za ruralno področje, močno je prevladovalo kmetijstvo. Danes je še vedno ohranjenih 37 % kmetijskih obdelovanih površin, vendar med najmočnejšo gospodarsko panogo sodi turizem.

Prebivalstvo občine je zaposleno v sekundarnih (gradbeništvo, proizvodnja) in terciarnih (promet, trgovina, turizem) ter ostalih gospodarskih dejavnostih v Šmarjeških Toplicah, Šmarjeti, Šentjerneju in Novem mestu. V Šmarjeških Toplicah so velik zaposlovalec Terme Šmarješke Toplice, v Šmarjeti tovarna Plastoform d. o. o., v Novem mestu pa Krka, tovarna zdravil d. d. in Revoz d. d.



## Šmarješke Toplice - "The spring of life energy"

The water, suitable geographical position and good living conditions were the main reasons why the early settlers populated this area. Several peoples settled here throughout history including the Celts and Romans. During the Migration Period, this area was discovered and populated by Slavs. Different cultures left their mark on the area leaving behind a treasure trove of archaeological finds that reveal a rich cultural and historical heritage as well as a diverse religious and ethnological heritage. The first written mention of the area dates back to 1074, when an agreement was concluded between the Bishop of Freising and the Patriarch of Aquileia regarding the ownership of agricultural properties in Vinji vrh.

As much as one third of the municipal area is designated as protected cultural heritage. A substantial part of the municipality is also protected under Natura 2000. We are well aware how tremendously important it is to preserve our natural and cultural heritage, both of which are represented in the theme trail titled "the Spring of Life Energy". This way, our heritage can be presented to a wider range of visitors.

We do not see the protected natural and cultural heritage sites as a burden, but rather as an advantage that leads to a brighter future in the field of spatial development based on sustainable development.

Šmarješke Toplice is renowned throughout Slovenia and Europe for its innovative spa tourism, which has developed into a modern health resort. Excellent natural conditions offer a rich variety of outdoor sporting activities and fun experiences in close proximity to unspoilt countryside.

The present-day municipality once mostly comprised of rural areas dominated by agriculture. Today, 37% of agricultural land remains intact; however, the main industry now is tourism.

The local inhabitants are mostly employed in the secondary (building industry, manufacturing) and tertiary (transport, trade, tourism) sectors in Šmarješke Toplice, Šmarjeta, Šentjernej and Novo mesto. Some of the major employers are the Thermal Spa in Šmarješke Toplice, the company Plastoform in Šmarjeta and the pharmaceutical company Krka and car manufacturer Revoz in Novo mesto.

Ohranjeno naravno okolje, bogato družabno življenje, urejeno področje socialnega varstva in zdravstva ter splošna gospodarska blaginja privabljajo v Šmarješke Toplice številne mlade družine. Cilj Občine Šmarješke Toplice je ustvariti privlačno in kvalitetno bivalno okolje za širši krog prebivalstva.



*The well-preserved natural environment, interesting social life, well-ordered social welfare and health care and general economic well-being are all the things that attract numerous young families to settle in Šmarješke Toplice. The goal of the Šmarješke Toplice Municipality is to create an appealing and high-quality living environment for a wider population.*

#### STATISTIČNI PODATKI /

#### STATISTICAL INFORMATION ABOUT ŠMARJEŠKE TOPLICE

ŠTEVILO PREBIVALCEV / POPULATION: 3,277

POVRŠINA / AREA: 3,420 ha

ŠTEVILO NASELIJ / NUMBER OF SETTLEMENTS: 24

ŠTEVILO GOSPODINJSTEV / NUMBER OF HOUSEHOLDS: 1,171

ŠTEVILO PRENOČITEV TURISTOV / NUMBER OF TOURIST OVERNIGHT STAYS: 93,000

GOSTOTA POSELITVE / DENSITY: 95 prebivalcev/km<sup>2</sup> / inhabitants/km<sup>2</sup>

POVPREČNA STAROST OBČANOV / AVERAGE AGE: 41 let / years

DOLŽINA CEST / TOTAL ROAD LENGTH: 101 km of municipal roads and 20 km of national roads

Vir podatkov: Statistični urad Republike Slovenije, 2015 / Data source: Statistical Office, the Republic of Slovenia, 2015



## Načrtovani / razvojni pristop

Občina Šmarješke Toplice je Odlok o Občinskem prostorskem načrtu, ki predstavlja najpomembnejši prostorski dokument, sprejela v letu 2012. Občinski prostorski načrt določa prostorski razvoj občine in pogoje za umeščanje ter oblikovanje objektov in drugih posegov v prostor.

V dokumentu so upoštevane usmeritve iz državnih prostorskih aktov, področne zakonodaje ter razvojne potrebe občine in njenih občanov. Občinski prostorski načrt je podlaga za sprejem občinskih podrobnih prostorskih načrtov oziroma zazidalnih načrtov.

V letu 2015 je bil sprejet zazidalni načrt za Konjeniški center Brezovica, v sklopu katerega se že izvajajo aktivnosti za vzpostavitev turističnih in kmetijskih dejavnosti (konjeniški center, hlevi, kozolci, apartmaji), ureja se zunanje površine (dvorišča, parkirišča, zelene površine) ter gradi ostale pripadajoče gospodarske objekte. Projekt je že v zaključni fazi.

V letu 2016 smo sprejeli zazidalni načrt za Turistično storitveno gospodarsko cono Dolenje Kronovo. S slednjim smo zagotovili možnosti za razvoj turističnih, storitvenih in servisnih dejavnosti na strateško zelo pomembnem in vplivnem območju, ob izvozu iz avtoceste Ljubljana–Zagreb. Prostor omogoča umestitev turističnih (gostinstvo, parkovne površine, postajališče za avtodome), storitvenih (motel, bencinski servis) in terciarnih dejavnosti (transport, logistika, parkirišča), hkrati pa tudi proizvodnih dejavnosti. Sledimo cilju, da bi se vse dejavnosti v coni celovito povezovale.

Za celostno in atraktivno ureditev urbanega središča Šmarjeških Toplic (lokalno poimenovano Prinovec) aktivno pristopamo k sprejetju zazidalnega načrta tudi za to območje in smo tik pred sprejemom dokumenta. Namen prostorske ureditve je oblikovati prepoznavno identiteto središča Šmarjeških Toplic v povezavi z ostalimi deli naselja, izboljšati kakovost bivanja in ustvariti nove poslovne možnosti s krepitvijo središčnih funkcij naselja.

Priprava podrobnih prostorskih oziroma zazidalnih načrtov poteka v skladu z veljavno prostorsko zakonodajo, smernicami nosilcev urejanja prostora in potrebami potencialnih investorjev. Občani in zainteresirana širša javnost lahko sodelujejo v postopku priprave občinskega podrobnega prostorskega načrta v času javne razgrnitve, ko imajo možnost podajanja pripomb in pobud k javno razgrnjenemu osnutku.

Cilj prostorskega razvoja občine je zagotavljanje primernih prostorskih možnosti za razvoj različnih dejavnosti ter skrb za

## The planned development approach

In 2012, the Municipality of Šmarješke Toplice passed the Ordinance on the Municipal Spatial Plan, which represents the most important spatial planning document in the Municipality. The municipal spatial plan outlines the spatial development of the municipality and the conditions for determining the best suitable location and design of buildings and other changes in the use of land.

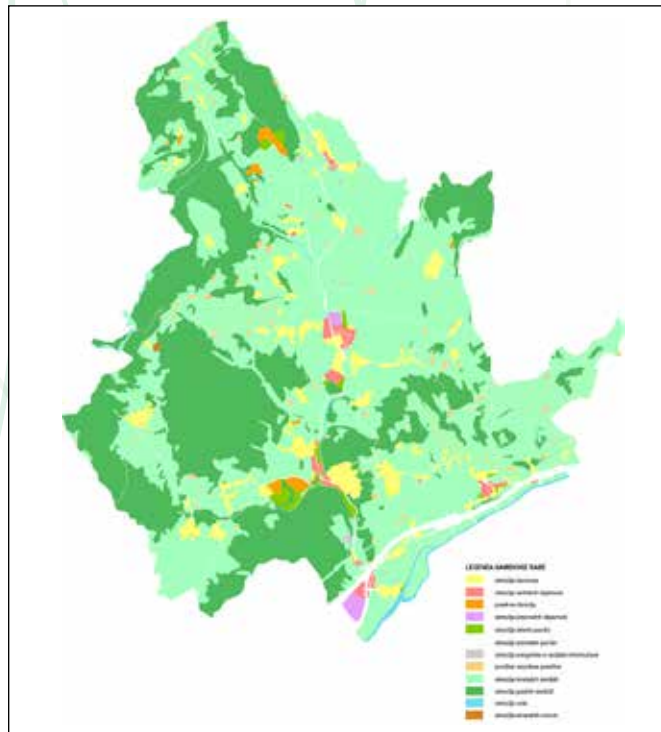
The document takes into account the guidelines from national spatial planning documents, departmental legislation and the development needs of the municipality and its inhabitants. The municipal spatial plan forms the basis for the adoption of detailed municipal spatial plans and/or town-planning schemes.

In 2015, a town-planning scheme was adopted for the Brezovica Equestrian Centre whereby activities for building the accompanying tourist and agricultural infrastructure are already under way (the equestrian facility, stables, hayracks, holiday apartments) and so is the beautification of the surrounding area (yards, gardens, car parks, green areas) and the construction of other associated facilities. The project is already in its final stages.

Furthermore, the town-planning scheme for the Dolenje Kronovo Tourism and Service Business Park was adopted in 2016. The goal is to ensure the future development of tourism and service and maintenance activities in a strategically very important and influential area – next to the A2 motorway exit (the Ljubljana–Zagreb route). The location enables the accommodation of tourism-related activities (hotels and restaurants, parks, motorhome rest areas), service activities (motel, service station) and other tertiary activities (transport, logistics and parking areas) as well as manufacturing activities. Our aim is to connect all the activities in the business park.

In order to make a comprehensive and appealing arrangement concerning the centre of Šmarješke Toplice (locally known as Prinovec), we are taking an active approach in devising a town-planning scheme for this area as well; we are now on the brink of adopting the document. The purpose of spatial planning is to forge a distinctive identity for the centre of Šmarješke Toplice in relation to the other parts of the town, improve the quality of living and create new business opportunities by strengthening the functionality of the town centre.

The preparation of detailed spatial plans and town-planning schemes is taking place in accordance with the applicable spatial planning legislation, the guidelines of the spatial planning stakeholders and the requirements of potential investors. The residents as well as the general public can participate in the process of preparing the detailed municipal spatial plan during a public unveiling, when they get a chance to make comments and offer suggestions regarding the unveiled draft plans.



**Območja z opredeljeno namensko rabo, Občinski prostorski načrt Občine Šmarješke Toplice,**  
**Areas of a detailed specified use of the spatial plan of Municipality Šmarješke Toplice**

ohranjanje naravne in kulturne dediščine na območju občine, kar se zagotavlja z usmerjanjem novih gradenj v obstoječa naselja in s pazljivim umeščanjem novih ureditev v krajino. Prav tako je poudarek na ohranjanju kmetijske rabe prostora ter prvin krajinske prepoznavnosti. Razvoj turistične dejavnosti v Šmarjeških Toplicah povezuje turistične programe z lokalno kmetijsko dejavnostjo ter ohranjanjem pestre in raznovrstne naravne in kulturne dediščine.

Cilj Občine Šmarješke Toplice v prihodnosti je, da uresniči in dokonča vse zastavljene razvojne projekte. V načrtu je dokončna izgradnja kanalizacijskega omrežja na celotnem območju Šmarjeških Toplic, vzpostavitev rastlinske čistilne naprave za celotno naselje Vinica pri Šmarjeti ter zagotavljanje neoporečne pitne vode za celotno področje občine. Trud in skrb sta usmerjena tudi na področje ravnanja z odpadki in miselnosti »zero waste« ter k projektu vzpostavitve zbirno reciklažnega centra v Turistično storitveni gospodarski coni Dolenje Kronovo.

Na področju urejanja cest je med večjimi projekti v načrtu rekonstrukcija cestne povezave med Šmarješkimi Toplicami in Šmarjeto z ureditvijo hodnika za pešce z javno razsvetlavo ter dvosmerne kolesarske poti. Projekt se bo pričel izvajati v letošnjem letu.

Na področju turizma je predvidena postavitve postajališča za avtodome s pripadajočo infrastrukturo, vzpostavitev novih turističnih točk na tematski poti »Vir življenjske energije« in postavitve opazovalnic za ptice in ostale živalske vrste močvirskega habitata v naravi ter ureditev privlačne vstopne točke v center Šmarjeških Toplic z gradnjo Centra kolesarstva in nordijske hoje, ki bo deloval za širše območje Dolenjske.

V načrtu je tudi izgradnja Centra šolskih in obšolskih dejavnosti v Šmarjeških Toplicah, katerega osrednja dejavnost bo temeljila na plavalnih in drugih naravoslovnih vsebinah. Ciljna skupina obiskovalcev pa je vsa slovenska osnovnošolska mladina.

Velik razvojni potencial se kaže z izgradnjo visokokakovostnega samooskrbnega hotelskega kompleksa v Klevevžu, katerega delovanje bo temeljilo na trajnostnem razvoju in bo predstavljal izjemno turistično zgodbo.

Z načrtovanimi razvojnimi projekti bomo na območju občine povečali število novih delovnih mest.



**Ureditev centra Šmarjeških Toplic,  
Spatial plan for the centre of Šmarješke Toplice**



**Turistično storitvena gospodarska cona Dolenje Kronovo,  
Dolenje Kronovo Tourism and Service Business Park**

The objective of the municipal spatial development strategy is providing suitable potential areas for the development of various activities and looking after the preservation of natural and cultural heritage within the municipality, which is ensured by directing any new buildings to be constructed inside the existing communities and carefully selecting locations for any new built-up areas. Emphasis has also been placed on the use of agricultural land and the components of landscape identity. The development of tourism in Šmarješke Toplice connects the tourism programmes with local agricultural activity and the preservation of colourful and diverse natural and cultural heritage.

One of the main goals of the Šmarješke Toplice Municipality is to complete all the initiated development projects. We are planning the final construction of the public sewage system throughout the entire area of Šmarješke Toplice, the construction of wetlands for wastewater treatment for the entire town of Vinica pri Šmarjeti and the provision of safe drinking water for the whole municipality. We are also focusing our efforts and attention on improving waste management and promoting the "zero waste" mentality as well as the project of setting up a waste collection and recycling centre in the Dolenje Kronovo Tourism and Service Business Park

One of the major roadworks projects is the planned reconstruction of the road link between Šmarješke Toplice and Šmarjeta, including the construction of a pedestrian lane with public lighting and a two-way cycle lane. The project is going to be launched this year.

In order to boost tourism, the plan is to build a motorhome rest area with all the related infrastructure, set up new tourist spots along the "Spring of Life Energy" theme trail, put up new huts for watching birds and other animals of the wetland habitat, build an appealing entry point into the centre of Šmarješke Toplice along with a Cycling and Nordic Walking Centre that will cater to the wider Dolenjska region.

There are also plans to build the Centre for School and Outdoor Education in Šmarješke Toplice, whose core activities will be swimming and natural science education. The target group of the Centre will primarily be Slovenian primary school children.

A great potential for development may be achieved with the construction of a high-quality self-sufficient hotel complex in Klevevž. Its activities will be based on sustainable development and will present a unique tourism experience.

All these planned development projects are intended to create many new job opportunities in the municipality.

## Naravno okolje

V občini Šmarješke Toplice se v Občinskem prostorskem načrtu spodbuja trajnostna raba naravnih virov, energetsko varčna gradnja ter izvedba in namestitve naprav za rabo obnovljivih virov energije, za zbiranje in uporabo padavinske vode, za kompostiranje biološko razgradljivih odpadkov za potrebe gospodinjstev.

V občini Šmarješke Toplice se zagotavlja stalna in kakovostna oskrba z naravno pitno vodo, varujejo se obstoječi in potencialni vodni viri, izvaja se gradnja novih ter prenova obstoječih delov vodovodnega sistema. Oskrba s pitno vodo v občini se zagotavlja preko obstoječega vodovodnega sistema vodarne Jezero, ki z naravno pitno vodo oskrbuje osem dolenjskih občin in tovarno zdravil Krka. Trenutno potekajo izboljšave vodovodnega sistema na področju celotne Dolenjske. Z namenom zmanjšanja porabe pitne vode se spodbuja varčna in smotrna raba. Spodbuja se k večjemu izkoriščanju možnosti uporabe čiste padavinske vode za sanitarne potrebe in zalivanje vrtov.

Za varovanje vodnih virov je poskrbljeno s čistilno napravo in kanalizacijskim omrežjem z dvema kanalizacijskima sistemoma – Šmarjeta in Družinska vas. V prihodnosti je načrtovana izgradnja še dodatnih dveh manjših kanalizacijskih sistemov s čistilnimi napravami. Na območjih, kjer kanalizacijski sistem ni predviden, se v gospodinjstvih načrtuje odvajanje in čiščenje odpadne vode s hišnimi čistilnimi napravami, katerih nakup delno sofinancira tudi Občina Šmarješke Toplice. S tem sledimo trajnostnemu ravnanju z okoljem.

Področje ravnanja z odpadki se ureja skladno z okoljskimi zahtevami. Na področju celotne občine je vzpostavljen sistem ekoloških otokov za ločeno zbiranje odpadkov, za odvoz odpadkov skrbi Javno podjetje Komunala Novo mesto d. o. o. Deponiranje odpadkov je urejeno v okviru regijskega Centra za ravnanje z odpadki Dolenjska. Javne površine na območju občine so opremljene z ustreznimi posodami za odlaganje odpadkov.

Urejenost in čistoča okolja sta bistvenega pomena za trajnostni razvoj kraja, kvaliteto bivanja prebivalcev in pogoj za dobro počutje in pozitivno zunanjo podobo, ki jo želimo predstaviti turistom in obiskovalcem. V sled ozaveščanja prebivalcev o pomenu varovanja naravnega okolja smo v letu



## The natural environment

The municipal spatial plan of Šmarješke Toplice focuses on encouraging sustainable use of natural resources, energy-efficient buildings and installation of facilities using renewable energy sources as well as collecting and using rainwater and composting biodegradable municipal waste.

The Municipality of Šmarješke Toplice provides a regular, good-quality supply of potable water, protects the existing and potential water resources, builds new sections of the water distribution system and maintains the existing ones. The drinking water supply in the municipality is provided through the existing water distribution system of the Jezero water treatment facility that supplies potable water to eight municipalities of Dolenjska and the pharmaceutical company Krka. The water distribution system throughout the entire Dolenjska region is currently being overhauled. In order to reduce the consumption of drinking water, a more economical and rational use of our drinking water is being encouraged. The municipality is trying to promote a more frequent use of clean rainwater for toilet flushing and garden/lawn irrigation.

The protection of water resources is ensured through a sewage treatment plant and a sewage network containing two sewage systems – Šmarjeta and Družinska vas. Two additional smaller sewage systems along with sewage treatment plants are planned in the future. In areas where the municipal sewage system (mains drainage) is not accessible (and there are no plans in the near future to connect these areas to the sewage system), the discharge and treatment of wastewater will be managed by domestic sewage treatment plants, which are being co-financed by the municipality. This is all part of our strategy to pursue sustainable management of the environment.

The field of waste management is regulated in compliance with environmental requirements. A system of recycling points for separate waste collection has been set up throughout the entire municipality; the waste removal services are provided by the Novo mesto Public Utility Company. Waste disposal is organized within the framework of the regional Waste Management Facility for Dolenjska. The municipal public areas are equipped with suitable containers for waste removal.

Having a litter-free community and clean environment is essential for the sustainable development of the town and for a good quality of life for the residents; it is also a prerequisite for general well-being and making a good impression on tourists and visitors. In order to raise people's awareness of the importance of protecting the natural environment, we



2012 izvedli projekt Trajnosti razvoj Občina Šmarješke Toplice, v sklopu katerega smo za vse občane izvedli izobraževalne delavnice s tematiko o samooskrbi z lokalno pridelano hrano, o uporabi obnovljivih virov energije in o ravnanju z odpadki. Programi okoljskega sodelovanja z mladimi se izvajajo tudi v osnovni šoli.

Vsako leto je organizirana spomladanska očiščevalna akcija, ki se je udeležijo občani ter člani društev, ki delujejo na področju ekologije in skrbijo za urejeno in čisto okolje.

Na celotnem področju občine so za namen plakatiranja urejena plakatna mesta, na katerih je plakatiranje dovoljeno le s soglasjem občine. S sprejetimi lokalnimi predpisi in ustreznim nadzorom na tem področju preprečujemo onesnaževanje okolja.

Vsa javna razsvetljava v občini je bila energetske prenovljena v letu 2012 in ne povzroča svetlobnega onesnaževanja.

Občina je naredila korak k dolgoročnemu načrtovanju razvoja na energetske in z energijo povezanim okoljskim razvojem in sprejela Lokalni energetske koncept občine. Omenjeni dokument občino in njene prebivalce usmerja k oblikovanju in vzdrževanju baz podatkov o porabnikih in rabi energije, uvajanju ukrepov učinkovite rabe energije, poviševanju energijske učinkovitosti in uvajanju obnovljivih virov energije. Dolgoročno načrtovanje energetskega razvoja je ključni element dolgoročnega gospodarskega razvoja občine in osnova za znižanje energijske odvisnosti ter vplivov na okolje.



*implemented a project in 2012 titled Sustainable Development of the Municipality of Šmarješke Toplice, under which we organized training workshops on the topic of self-supply of locally produced food, the use of renewable energy sources and waste management. Programmes of environmental cooperation with young people are also being implemented on a primary school level.*

*Every year we organize a spring cleaning campaign involving residents and members of various ecological societies, who come together to clean and beautify their community.*

*With regard to billposting, certain locations have been arranged throughout the entire municipality where billposting is permitted, but only with the consent of the local authority. With the help of adopted local regulations and proper supervision in this field, we are doing our best to combat environmental pollution.*

*All public street lighting in the municipality was renovated in 2012 to become more energy-efficient and it no longer causes light pollution.*

*The municipality has taken a step towards a long-term development plan in the field of energy-related environmental development and has adopted the Local Energy Strategy. This document directs the municipality and its residents towards the creation and maintenance of databases on energy consumers and the use of energy, the adoption of energy efficiency measures, increasing energy efficiency and the introduction of renewable energy technologies. Long-term planning of energy development is a key element of the long-term economic development of the municipality and the basis for reducing energy dependence and impact on the environment.*



## Grajeno okolje

V grajenem okolju prevladujejo stanovanjske hiše, zidanice in kozolci kot gospodarski objekti, hlevi, javni objekti za upravne, zdravstvene, kulturne in izobraževalne vsebine, cerkve s številnimi podružnicami, spomeniki ter objekti komunalne infrastrukture. Pri rekonstrukcijah in novogradnjah se upošteva tradicionalne in lokalne elemente gradnje in pretežno uporablja tudi lokalne materiale.



Na območju občine imamo kar 24 enot kulturnih spomenikov, ki so vpisani v Register nepremične kulturne dediščine Republike Slovenije. Ob zavedanju pomena kulturne dediščine v letošnjem letu v sodelovanju z Zavodom za varstvo kulturne dediščine Republike Slovenije aktivno pristopamo k sprejemu Odloka o razglasitvi nepremičnih kulturnih spomenikov lokalnega pomena na območju Občine Šmarješke Toplice, s katerim bodo določeni pogoji in smernice za ustrezno varovanje in ohranjanje kulturnih spomenikov.



## The built environment

The built environment is dominated by detached houses, vineyard cottages, hayracks, stables, public buildings for administrative, medical, cultural and educational purposes, churches and multiple filial churches, monuments and municipal infrastructure facilities. When renovating existing structures and building new ones, traditional and local building practices are applied and predominantly local building materials are used.



There are as many as 24 cultural monuments in the Municipality, which have been entered in the Register of Immovable Cultural Heritage of Slovenia. Being aware of the importance of cultural heritage, we are cooperating with the Institute for the Protection of Cultural Heritage of the Republic of Slovenia to adopt an Ordinance on the Proclamation of Immovable Cultural Monuments of Local Importance, which will lay down the conditions and guidelines for the appropriate protection and preservation of cultural monuments.



## Pokrajina

Območje občine Šmarješke Toplice leži v jugovzhodnem delu Slovenije in ima značilno razpršeno poselitev v obliki manjših naselij. Na območju celotne občine se razprostira 24 manjših vasi oz. naselij, od tega so tri večja naselja, Šmarjeta, Bela Cerkev in turistično središče Šmarješke Toplice. Že naravno oblikovano okolje ima značilne ločnice med ruralnim in urbanim delom. S prostorskim načrtovanjem pa še dodatno poskrbimo, da se ustrezno in strokovno poveže ali loči urbani del in širšo ruralno okolico.

Južno območje občine je strateško pomembno, saj se navezuje na pomembno avtocestno povezavo med Ljubljano in Zagrebom ter reko Krko.

Pokrajina je zelo raznolika, razgibana in pestra. Razprostira se med dvema vinorodnima gričema: Koglo (417 m) in Vinji vrh (392 m) sta na prisojni legi porasla z vinsko trto, na osojni pa predvsem z bukovimi gozdovi. Obe vinski gorici sta tudi odlični izletniški izhodišči in razgledni točki.

Najpomembnejša naravna vrednota na območju je voda, ki je skozi stoletja odločilno vplivala na oblikovanje tukajšnje pokrajine. Območje je prepleteno s številnimi manjšimi potoki in izviri termalne vode, za prebivalce tega območja pa je predvsem pomembna bogata zaloga podtalnice. Voda je z nanosi materiala ustvarila obsežne ravnice, kjer se zaradi rodovitnosti nahajajo polja, njive ter travniki. Za kmetijstvo v občini je značilno, da ni intenzivno in je pretežno samooskrbno. Gre predvsem za manjše kmetije z majhnim deležem obdelovalnih površin, kar pomeni, da se kakovost okolja ohranja.

Potoka Laknica in Radulja sta s pritoki ustvarila mokrišče, imenovano Zdravci, z biotsko zelo pestro in raznovrstno floro in favno. To območje je bogato naravno okolje in daje zavetje redkim in zaščitenim rastlinskim in živalskim vrstam. Drevoredi stoletnih vrb, ki rastejo ob strugi Radulje, dajejo pokrajini svojevrsten videz.

Potok Radulja in termalni izviri so oblikovali naravno znamenitost tega okolja, imenovano Klevevž. Termalni izvir prihaja na plan pod kanjonom soteske Radulje. Temperatura se skozi celotno leto giblje med 21 in 25 °C. V poletnih mesecih se domačini radi osvežijo v kamnitem bazenu s termalno vodo. Področje Klevevža je bogato z apnencem in ta je razlog, da



## The landscape

The Municipality of Šmarješke Toplice is located in the southeastern part of Slovenia and for the most part consists of small rural communities in the typical dispersed settlement pattern. The whole territory of the municipality covers 24 villages or small towns, four three of which are larger communities, Šmarjeta, Bela Cerkev and the resort town Šmarješke Toplice. The natural environment itself is characterized by the typical dividing line between the rural and urban part of the landscape. Spatial planning is implemented in a suitable, professional manner to either connect or divide the urban area and the wider countryside.

The southern part of the municipality is strategically important because it is linked to the Ljubljana-Zagreb section of the motorway and the Krka River.

The landscape is very diverse and interesting. It stretches between two vine-clad hills: Koglo (417 m) and Vinji vrh (392 m), which are covered with vineyards on the south-facing side and with beech forests on the north-facing side. Both vineyard hills are also excellent day-trip locations and panoramic spots.

The most important natural resource in this area is water, which has left a significant mark on the area and helped shape the landscape. The area is interlaced with numerous small streams and thermal springs, but for the local inhabitants, it is the bountiful supply of groundwater that matters the most. Water deposited layers upon layers of material, forming extensive plains with fertile fields and meadows. The agriculture in the municipality is predominantly subsistence rather than intensive. Farmers mostly own smaller farmsteads with small portions of arable land, which means that the quality of the environment is preserved.

Two streams, Laknica and Radulja, with its tributaries created a wetland called Zdravci that has a very diverse flora and fauna. This area is a rich natural environment that harbours several rare and protected species of animals and plants. The rows of century-old willows that grow along the banks of Radulja give the area its unique appearance.

The Radulja stream and thermal springs have formed a scenic attraction known as Klevevž. The thermal spring emerges underneath the Radulja gorge. The temperature throughout the year varies between 21 and 25 °C. In summer, the locals like to refresh themselves in the thermal water stone pool. The Klevevž area is

sta se kot značilen kraški pojav tu oblikovali dve kraški jami. Spodnja Klevevška jama je edina slovenska jama s hipotermalnim vrelcem. Topla termalna voda se v jami meša z mrzlo studenčnico in ustvarja toplo kopel. Jami nudita eno redkih zatočišč za netopirje na širšem območju in sta zato vključeni v naravno zavarovano območje Nature 2000, kamor spada tudi celotno območje potoka Radulja s pritoki.

Skoraj 20 % vsega ozemlja občine je v omenjenem zaščitenem varovalnem prostoru vodnih habitatov ptic in rastlinskih vrst. V sodelovanju z Zavodom Republike Slovenije za varstvo narave se ozemlje občine, varovano z Naturo 2000, ohranja skozi različne načine interpretacije naravne dediščine. Naravne danosti so povezane v tematski poti »Vir življenjske energije«. Znamenitosti območja, tako naravne kot kulturne, so zabeležene v turistični brošuri ter na spletnih straneh, kar pomeni, da so informacije na voljo slehernemu obiskovalcu.



rich in limestone and features two typical Karst caves. The Lower Klevevž cave is the only Slovenian cave featuring a hypothermal spring. Hot thermal water in the cave is mixed with cold spring water, creating a warm bath. The two caves offer one of the few natural habitats for bats in the wider area and are therefore included in the natural protected area of Natura 2000, which includes the entire area of the Radulja stream and its tributaries.

Almost 20% of the entire municipal territory is part of the mentioned protected area of aquatic habitats for birds and plants. With the collaboration of the Institute of the Republic of Slovenia for Nature Conservation, the territory of the municipality, which is protected by Natura 2000, is preserved through different methods of interpreting the natural heritage. The natural attractions are linked together in the theme trail called "Spring of Life Energy." The attractions of the area, both natural and cultural, are described in tourist brochures and on websites, making the information readily available to every visitor.



## Odprti zeleni prostori

Občina Šmarješke Toplice je obdana z elementi naravnega okolja – travniki, pašniki, njivami, gozdovi, močvirji in potoki. Naravno bogastvo dopolnjuje več urejenih odprtih zelenih površin, za katere skrbijo zaposleni v javnih in zasebnih zavodih ter aktivni člani prostovoljnih društev, ki delujejo v občini. Urejeni zeleni prostori so namenjeni ter dostopni vsem občanom in obiskovalcem. Prostori omogočajo oddih v stiku z naravo, izvajanje športnih in rekreativnih aktivnosti, druženje ter služijo kot prostor za prireditve na prostem.

Osrednji zeleni prostor v občini predstavlja park ob zdravilišču Terme Šmarješke Toplice, v katerem je urejena botanična pot z označenimi drevesnimi vrstami s pripadajočo turistično infrastrukturo. Ob vhodu v park je poskrbljeno za najmlajše na urejenem otroškem igrišču, prav tako se na stojnicah vsako soboto odvija »Kmečka tržnica«, kjer lokalni pridelovalci in proizvajalci prodajajo svoje pridelke in izdelke.

Obsežne zelene površine se nahajajo tudi ob Osnovni šoli Šmarjeta in vrtcu Sonček, kjer zaposleni in otroci skrbijo za šolski park z drevoredom, naravoslovno učno pot, šolsko športno igrišče ter sodobno zasnovano in opremljeno otroško igrišče.

Za rekreativne športe, nogomet, tenis, košarko, odbojko, mini golf imamo na območju občine štiri travnata igrišča, tri igrišča z asfaltno podlago, štiri tenis igrišča ter igrišče z mivko.

Občina ima tri urejena parkovna in žarna pokopališča s pripadajočimi poslovnimi vežicami, v Beli Cerkvi, v Šmarjeti in v Slapih. Za njihovo urejenost in upravljanje po pogodbi skrbi nosilec koncesije ter lastniki grobov sami. Iz razloga po izboljšanju kakovosti poslovnih objektov je Občina v letu 2016 pričela z izgradnjo novega objekta v Šmarjeti, v sklopu projekta se izvaja tudi razširitev parkirišča.

Cerkev Karmelske Matere Božje in pripadajoče pokopališče v vasi Slape je pomemben kulturno-zgodovinski spomenik.

V občini sta tudi dve krožišči, ki imata poleg usmerjanja in umirjanja prometa v kraju tudi simbolični pomen. Krožišče v Dolenjem Kronovem je osrednja vstopna točka v Občino Šmarješke Toplice. Pomen in prepoznavnost kraja se kaže s figuro oranta, arheološke najdbe z Vinjega vrha, ki s svojo



## Open green spaces

The Municipality of Šmarješke Toplice is surrounded by meadows, grazing land, fields, forests, marshland and streams. These natural resources are complemented by public green areas that are managed by the employees of public and private institutions and active members of voluntary groups operating within the municipality. The public green areas are intended for and available to all residents and visitors. These areas provide a chance for people to stay in touch with nature, do sports and recreational activities and socialize; they also serve as spaces for open-air events.

The central public green area in the municipality is the park next to the thermal spa containing a botanical garden trail with marked tree species and the related infrastructure. There is a children's playground at the entrance to the park and nearby, there is a "Farmers' Market" where local growers and artisans sell their produce and products every Saturday.

Extensive green areas are also located at the Šmarjeta Primary School and the Sonček Kindergarten, where the staff and children take care of the tree-lined school park, the nature trail, the school sports field and running track and temporarily designed and equipped playground.

The municipality has four grass playing fields, three asphalt playing fields, four tennis courts and a sand court for recreational sports, football, tennis, basketball, volleyball and miniature golf.

The municipality has three cemeteries, each with a chapel of rest in Bela Cerkev, Šmarjeta and Slape. The cemeteries are managed by a concession operator and the owners of grave plots. In 2016, we began construction of a new cemetery facility in Šmarjeta and an extension of the cemetery car park.

The Church of Our Lady of Mount Carmel and the associated cemetery in the village of Slape is an important cultural and historical monument.

There are two roundabouts in the municipality, which in addition to having a traffic control and traffic calming role, also have a symbolic value for the towns. The roundabout in Dolenje Kronovo is the main entry point into the Municipality of Šmarješke Toplice. The importance and recognition of the town is demonstrated by the depiction of the Orant (the praying man – a bronze pendant with this depiction was uncovered by archaeologists in Vinji vrh),

odprtostjo vabi k spoznavanju kraja. Drugo krožišče v Šmarjeti poudarja predvsem pomen vode, ki je v svojih treh pojavnih oblikah (podtalnica, potoki in termalni vrelni) osrednji razlog za prve poselitve prebivalcev na območju občine.

Svojo strugo si je na območju utrlo kar pet potokov, na mejnem območju občine pa tudi reka Krka, osrednji vodotok Dolenjske. S sonaravnim urejanjem strug teh vodotokov se upošteva naravni vodni tok in varuje tipično vodno rastlinstvo in živalstvo.

V občini Šmarješke Toplice je moč opaziti veliko število urejenih zelenjavnih vrtov, ki so del tradicionalne podeželske krajine in se v večini nahajajo na dvoriščni strani posameznih stanovanjskih stavb. Bogate in pestre so tudi sezonske zasaditve balkonskega cvetja in cvetličnih vrtov. Vsako leto v poletnih mesecih poteka ocenjevanje najbolj urejenega občinskega naselja. Komisija ocenjuje zunanjo podobo vasi in skrb za vaške zelene površine ter urejenost zunanosti dvorišč in vrtov.



which seems to invite visitors to explore the town with its open-arms gesture. The other roundabout in Šmarjeta places a particular emphasis on the importance of water (groundwater, streams and thermal springs) that was the central reason for the settlement of the first inhabitants in this area.

There are as many as five streams in the area as well as the Krka River, the main watercourse of Dolenjska, which flows along the borderline area of the municipality. The sustainable management of riverbeds of these watercourses takes into account the natural water flow and the protection of typical aquatic flora and fauna.

In the municipality of Šmarješke Toplice, it is possible to see a large number of well-groomed vegetable gardens that are part of the traditional rural landscape and are mostly located in front of individual residential buildings. There is also a rich and varied seasonal display of flower arrangements on balconies and in flower gardens. Every summer, we hold a competition for the best kept town or village in the municipality. A panel of judges evaluates the appearance of each community and the level of care of green areas as well as the tidiness and orderliness of driveways and gardens.



## Trajni nasadi

V preteklosti so prebivalci v podeželskem okolju posvečali pozornost trajnim zasaditvam kmetijskih površin s sadnim drevjem in vinsko trto ter negovanju gozdnih površin. Z opuščanjem kmetijstva kot nosilne gospodarske dejavnosti in oblikovanjem naselja Šmarjeta v lokalno središče ter razvojem in vzponom Šmarjeških Toplic v eno od vodilnih termalnih središč v Sloveniji pa se je spremenil tudi pogled na urejanje okolice in potreba po parkovnih, rekreacijskih in športnih površinah.

Največje parkovne površine z različnimi avtohtonimi drevesnimi vrstami so v parku Term Šmarješke Toplice. Drevesne vrste, ki rastejo v parku, se lepo dopolnjujejo z avtohtonimi drevesnimi vrstami listnatega gozda, ki se razrašča ob desnem bregu potoka Toplica. Park je opremljen z ustrežno turistično infrastrukturo in označbami drevesnih vrst. Park vzdržujejo zaposleni v Termah Šmarješke Toplice.

Občinski prostorski načrt predvideva in načrtuje parkovne ureditve in druge ureditve zelenih površin, v večini z zasaditvijo avtohtonih rastlinskih vrst v smislu trajnostnega razvoja. Ob izvajanju posegov v prostor se izvedejo tudi ukrepi za preprečevanje razvoja invazivnih in škodljivih rastlinskih vrst. Dolgoročni cilj, h kateremu stremimo, je, da se obstoječe drevoode ohranja in ustrezno obnavlja ter nadomesti posamezna poškodovana drevesa z enako vrsto. Zasaditve površin v javni rabi morajo vključevati drevesno in grmovno vegetacijo, pri čemer se ohranja čim več avtohtone vegetacije. Nove zasaditve ne smejo ovirati prometne varnosti oziroma preglednosti. V okolici objektov v javni rabi in na območjih stanovanj je prepovedano uporabljati alergene vrste in vrste rastlin, ki imajo strupene plodove ali druge dele.

Med avtohtono trajno zasaditev spadajo tudi številni vinogradi na gričevnatih predelih, ki so za ostalo kmetijsko obdelavo manj primerni. Vinogradništvo je bilo skozi zgodovino ena temeljnih kmetijskih panog na tem območju. Tradicionalno se v vinogradih obdelujejo sorte vinske trte, iz katerih se v večini prideluje značilno suho rdeče vino, imenovano cviček. Vinogradi in pripadajoči tipični stavbni elementi – zidanice in hrami – dajejo pokrajini njeno značilno podobo.



## Perennial plants

In the past, people living in rural areas devoted their attention to planting perennial plants such as fruit trees and grapevines and looking after wooded areas. With the gradual abandonment of agriculture as the main economic activity and the development of Šmarjeta into the municipal centre as well as the advancement of Šmarješke Toplice to become one of the leading health resorts in Slovenia, there has been a significant shift in the way we perceive landscaping and the need for parks, recreational areas and sports grounds.

The largest parks with a variety of native tree species are located in the park of Šmarješke Toplice Thermal Spa. Tree species that grow in the park are nicely complemented with native tree species of the deciduous forest that grows along the right bank of the Toplica stream. The park is equipped with adequate tourist infrastructure and information boards about various tree species. The park is maintained by the thermal spa staff.

The municipal spatial plan envisages opening more parks and other green areas, mostly by planting native plant species in the context of sustainable development. Any land development activities are typically accompanied by preventive measures against the spreading of invasive and harmful plant species. The long-term goal to which we aspire is to maintain and properly restore the existing avenues planted with trees and replace any damaged trees with the same tree species. Plants in public areas should include trees and shrubbery, while maintaining as much of the native vegetation as possible. New plantings should not impede traffic safety and visibility. The planting of allergenic or toxic plants is prohibited in the vicinity of public or residential buildings.

The indigenous perennial species also include grapevines found in numerous vineyards in the hilly areas, which are less suitable for other types of agriculture. Throughout history, viticulture has been one of the primary agricultural branches in the area. The vineyards in the region traditionally grow wine grape varieties that typically produce the dry red wine known as Cviček. The vineyards and the associated buildings – vineyard cottages and wine storage rooms – give the landscape its characteristic appearance.

## Sezonski nasadi

Na območju občine Šmarješke Toplice so balkonske ograje, nokenske police in cvetlične gredice stanovanjskih stavb domačinov že od nekdaj krasile cvetoče rastline. Tradicija zasajanja enoletnic, ki so olepševale že domove preteklih generacij, je v tem okolju še vedno zelo spoštovana. Zasaditve so prilagojene tako okolju kot tudi letnemu času. Spomladi na gredicah (tulipani, narcise, hijacinte) in travnikih (trobentice, zvončki, žafran, teloh, vijolice) zacveti prvo spomladansko cvetje, v poletnem obdobju so cvetlična korita zasajena z različnimi vrstami okrasnih rastlin, značilnih za ruralno okolje (pelargonije, vodenke, fuksije, viseči nageljni, petunije, begonije), ki ga v jesenskem času zmanjšane vegetacije nadomestijo trpežnejše sorte (mačehe). Vse omenjene zasaditve na domovih negujejo domačini sami.



Občina Šmarješke Toplice vsako leto v sodelovanju z javnimi zavodi in zasebnimi podjetji poskrbi za poenoteno in skladno zasaditev talnih cvetličnih korit in cvetličnih gredic na različnih zelenih površinah, ki skupaj z drevesi in grmovnicami ter ostalo infrastrukturo tvorijo usklajeno celoto. Za sezonske nasade na javnih površinah skrbijo zaposleni na Občini Šmarješke Toplice, zaposleni v lokalnih zavodih in podjetjih pa tam, kjer se površine nahajajo ob objektih, ki jih upravljajo.



## Seasonal plants

The balcony balustrades, windowsills and flower beds of houses in the Šmarješke Toplice Municipality have always been adorned by blossoming flowers. The tradition of planting annuals, which have been used to decorate homes for many generations, is still highly revered here. Plantings are adapted to both the environment and the time of year. In spring, the flower beds (tulips, daffodils, hyacinths) and meadows (primroses, snowdrops, saffron, hellebore, violets) come alive with the first spring flowers and during the summer the flower pots are planted with different species of ornamental plants typical of the rural environment (geraniums, impatiens, fuchsia, carnations, petunias, begonias), which are replaced with hardier varieties (pansies) in autumn. The residents cultivate all these flowers themselves.



Each year, the Municipality of Šmarješke Toplice, in cooperation with public institutions and private companies, arranges a unified and coherent planting of flower planters and flowerbeds over different green areas, which together with trees, shrubs and other infrastructure form a coherent whole. The seasonal plantings in public areas are managed by the municipal workers or by the employees of local institutions and companies where the green areas are located.



## Trud in udeležnost

Skrb za čisto in urejeno, predvsem pa lokalnim prebivalcem in obiskovalcem prijetno okolje je v interesu celotne lokalne skupnosti. V Občini Šmarješke Toplice aktivno deluje 30 društev. Posamezna društva združujejo skupine ljudi s podobnimi interesi, ki se trudijo, da je družabno življenje in okolje, v katerem živijo, kvalitetno in pestro z dogajanjem. Prostovoljna društva delujejo na področju turizma, kulinarike, vinogradništva in vinarstva, športa, kulture, glasbe, zgodovine, ekologije in gasilstva. Vsa omenjena društva imajo na območju občine že dolgoletno tradicijo in so aktivno vključena v soustvarjanje družabnega življenja v kraju. Pripravljajo vrsto tradicionalnih prireditev (Sožitje kruha in vina, sekanje pirhov, Martinov pohod, srečanje pevskih zborov, Cvičkarija in salamiada, gasilske veselice, prvomajska budnica, Šmarješki tek), izvajajo pa tudi izobraževalne in ustvarjalne delavnice.

Pomen prostovoljstva in družabnega življenja najbolj živi v Hiši žive dediščine »Iz narave in preteklosti za prihodnost«, kar je najboljši pokazatelj, da je v prostovoljnih društvih največ ustvarjalne energije. Z delovanjem v Hiši žive dediščine društva promovirajo svoje dejavnosti in hkrati tudi Občino Šmarješke Toplice. Skupaj sledimo sloganu »Iz narave in preteklosti za prihodnost« in cilj je, da našim zanamcem pokažemo, da sta naše največje bogastvo naravna in kulturna dediščina ter pristni človeški odnosi. Vzorno je tudi sodelovanje med društvi, občino in turističnimi ponudniki.

Vsi skupaj skrbimo za urejeno okolje, izvajamo očiščevalne akcije, prirejamo tekmovanja za najlepše urejeno naselje v občini ter organiziramo različne že tradicionalne prireditve. Predstavniki in člani društev so večkrat tudi prejemniki občinskih priznanj za posebne zasluge.

Člani društev aktivno sodelujejo tudi v okviru delovanja Kmečke tržnice, ne samo v obliki občasne prodaje svojih unikatnih izdelkov in pridelkov, temveč tudi v obliki izobraževalnih predavanj in delavnic.

Društva delujejo kot neprofitna in v večji meri svojo redno dejavnost opravljajo na podlagi financiranja iz naslova članarin članov društva. Za dodatni vir financiranja društev na podlagi javnih razpisov skrbi občina, ki jim s sredstvi omogoči izvajanje projektnega dela in organizacijo prireditev.

Tesno z društvi, občino in ostalimi v lokalni skupnosti sodeluje Javni zavod Osnovna šola Šmarjeta z vrtcem Sonček.



## The invested effort and participation

Making an effort to keep a clean, litter-free and pleasant environment for local residents and visitors alike is in the interest of the entire local community. There are 30 clubs (societies) operating in the Municipality of Šmarješke Toplice. Individual clubs bring together groups of people with similar interests, who are trying to make social life and the environment in which they live more fulfilling and eventful. There are many voluntary clubs operating in the field of tourism, cuisine, viticulture and winemaking, sport, culture, music, history, ecology and fire fighting. All these clubs have a long tradition in the municipality and are actively involved in co-organizing the social life in their respective local communities. They are in charge of preparing a number of traditional events (the Harmony of Bread and Wine, "egg chopping", the St. Martin's Day Hike, the "meeting of choirs", Cvičkarija and Salamiada, fire brigade fêtes, the Martinmas "wake-up call" and the Šmarješke Toplice Marathon), and they also organize educational and creative workshops.

The importance of volunteering and socializing is nicely demonstrated in the House of Living Heritage: "From nature and the past for the future", which is the best indicator that our voluntary clubs are great fountains of creative energy. By operating in the House of Living Heritage, the clubs have the chance to promote their activities and the municipality. We pursue the slogan "From nature and the past for the future", and the goal is to show our future generations that our greatest wealth are the natural and cultural heritage and genuine human relationships. We also cherish the exemplary cooperation between the clubs, municipalities and tourism providers.

Together we look after our environment, organize cleaning campaigns, organize competitions for the tidiest community in the municipality and organize a variety of annual events. Representatives and members of clubs are often the recipients of municipal awards for special merits.

Club members are also actively involved in the organization of the farmers' market, not only by occasionally selling their unique products and produce, but also by providing educational lectures and workshops.

Clubs operate on a non-profit basis and get the funding for their regular activities from membership fees. The municipality provides them with an additional source of funding on the basis of tendering procedures to help them carry out their projects and organize events.

Our Šmarjeta Primary School and the Sonček Kindergarten also work closely with the clubs, the municipality and others from the local community.

## Turizem in prosti čas

Turizem je pomembna razvojna priložnost, ki se je zaveda tudi Občina Šmarješke Toplice. Turistično zgodbo območja gradi zdraviliški turizem v okviru zdravilišča Terme Krka Šmarješke Toplice. Dodana vrednost klasični zdraviliški turistični dejavnosti je v povezovanju lokalne skupnosti, različnih društev ter turističnih ponudnikov, v poudarjanju naravne in kulturne dediščine, trajnostni oskrbi ter izbranih novih načinov za preživljanje prostega časa.

Občina sledi smernicam, začrtanim v dokumentu Strategija razvoja turizma, ki je bila podlaga za uspešno realizacijo novih turističnih produktov, ki prinašajo dodano vrednost kraju. Unikatne turistične zgodbe pritegnejo gosta, da tudi sam razišče Šmarješke Toplice ter kraj zapusti z dobrimi vtisi. Trenutno je v pripravi novelacija Strategije razvoja turizma v Občini Šmarješke Toplice.

Šmarješke Toplice imajo vse potrebne pogoje tako za izvedbo dnevnih izletov kot za stacionarni turizem. Gostje imajo neštete možnosti za športne aktivnosti (nordijska hoja, tek, pohodništvo, kolesarjenje, rolanje, plavanje, padalstvo, kajakaštvo, jahanje), k udeleževanju jih še bolj pritegne razgibana in zelena pokrajina. V tematsko vodeni poti imajo gostje možnost, da spoznajo bogato naravno in kulturno dediščino. Ob nekaterih že urejenih turističnih točkah so na voljo sprostitevne ploščadi ter ostala urbana oprema. Tedensko Šmarješke Toplice obišče veliko tujih turistov iz različnih držav, zato so informacijske table opremljene z opisi znamenitosti v šestih jezikih.

Poleg namestitvev v hotelih Term Šmarješke Toplice je razvita tudi sobodajalska dejavnost. Inovativen turistični produkt predstavlja prenočevanje gostov v zidanicah, pristni stavbni dediščini, značilni za vinorodna območja. V sklopu projekta Turizem v zidanicah smo za turistični namen odprli prvo zidanico v Sloveniji, v kateri je možno prenočevati, se predajati užitek narave sredi vinskih gorc ter okušati izvrstna vina in dolensko kulinariko.

Skozi leto se v kraju zvrstijo številne turistične in tradicionalne prireditve v sodelovanju in organizaciji občine, lokalnih društev in turističnih ponudnikov.



## Tourism and leisure

Tourism is an important development opportunity for our municipality. The most important tourism-related activity in Šmarješke Toplice is wellness tourism, which is provided by the Krka Thermal Spa. The added value to the traditional wellness tourism activities comes from bringing together local communities, various clubs and tourism service providers, as well as emphasizing natural and cultural heritage, sustainable energy supply and new ways of spending your free time.

The municipality follows the guidelines outlined in the document titled the Strategy of Tourism Development, which was the basis for the successful realization of new tourism products that bring added value to the town. The unique tourism story attracts visitors to explore Šmarješke Toplice and leave the town with a good impression. An updated version of the Strategy of Tourism Development in the Municipality of Šmarješke Toplice is currently being drawn up.

Šmarješke Toplice meets all the necessary conditions for providing both excursion tourism and stationary tourism. The visitors have countless opportunities for sporting activities (Nordic walking, running, hiking, cycling, rollerblading, swimming, paragliding/parachute jumping, kayaking, horseback riding), and what makes the experience even more attractive is the varied and green landscape. The theme trail gives visitors the opportunity to learn about the rich natural and cultural heritage. Certain tourist spots are equipped with "relaxation platforms" and other urban equipment. Many foreign tourists from different countries visit Šmarješke Toplice every week, so there are plenty of information signs around providing descriptions of tourist attractions in six languages.

In addition to hotel accommodation, there is plenty of private accommodation to choose from. A more innovative tourist approach enables guests to stay in vineyard cottages – part of the authentic architectural heritage typical of wine-growing areas. In the context of the "Tourism in Vineyard Cottages" project, the first vineyard cottage for tourists in Slovenia offering overnight accommodation was opened in our municipality; this type of accommodation also gives visitors a chance to relax amid vine-clad hills and taste the fine wines and cuisine of Dolenjska.

Bogato zgodovino in etnološke značilnosti kraja ter dinamičnost lokalnih društev pa obiskovalci lahko spoznajo v Hiši žive dediščine v Beli Cerkvi.

Na letni ravni v Šmarjeških Toplicah prenoči okoli 95.000 gostov. V kraju imamo turistično informacijski center, kjer gostje pridobijo vse informacije ter usmeritve za številne aktivnosti. Ponudba kraja je predstavljena tudi na svetovnem spletu in se promovira preko družabnih omrežij, preko lokalnih medijev, občasno tudi širše v slovenskem prostoru. Pripravljene imamo turistične brošure, ki gostu omogočijo, da kraj raziskuje tudi sam in ob tem pridobi osnovne informacije.



Turizem bo sledil sodobnim smernicam, poudarki bodo na spoznavanju narave, opazovanju redkih živalskih vrst, ozaščanju o pomenu vode ter trajnostnega razvoja z uvedbo samooskrbnega hotelskega kompleksa, ki bo združeval visokokakovostni turizem, prepleten z bogato zgodovinsko vrednostjo in izobraževalnim procesom.



Throughout the year, there are numerous tourist and traditional events organized in cooperation with the municipality, local clubs and tourism service providers.

The rich history and ethnological characteristics of the town are on display in the House of Living Heritage in Bela Cerkev.

There are around 95,000 guests spending the night in Šmarješke Toplice annually. The town has a tourist information centre, where visitors can get all the information and advice for numerous activities. The town's tourist offer is also presented on the Internet and promoted on social networks, the local media, and occasionally in the national media. There are also tourist brochures available that provide visitors with the information they need to explore the town on their own.



The tourist offer in the town will continue to follow modern trends, the emphasis being on learning about nature, observing rare fauna, raising awareness of the importance of water and sustainable development. There are plans to build a self-sufficient hotel complex that will combine high-quality tourism interwoven with a rich historical and educational value.

## Terme Šmarješke Toplice

Terme Šmarješke Toplice so sodobno slovensko termalno zdravilišče, znano po vrhunskih zdraviliških storitvah in izbrani ponudbi najsodobnejših storitev medicinskega velnesa, ki gostom ponuja rešitve iz začaranega kroga hitrega tempa vsakdana. Šmarješki gostje se med oddihom v termah poučijo o zdravem načinu življenja in zdrave navade prenešajo tudi v svoje vsakdanje življenje.

Zdraviliški kompleks, v katerem je tudi znameniti leseni bazen, zgrajen nad vrelcem termalne vode, obkrožajo številne sprehajalne, pohodniške in kolesarske poti. V parku, ki se razprostira na približno treh hektarjih, raste devetdeset različnih drevesnih in grmovnih vrst, tu živi tudi 25 vrst ptic. Posebnost šmarješke okolice je devet urejenih poti za nordijsko hojo, v športnem parku so tudi igrišča za tenis, nogomet, košarko, odbojko, mini golf, balinišče in prostor za piknik.

Zanimivost zdraviliškega parka je rastišče indijskega lotosa, ki je botanična redkost v svetovnem merilu in poleti prekrije gladino jezera z nežnimi rožnatimi cvetovi.

Šmarješki zdravstveni center je cenjen in poznan predvsem po učinkovitem zdravljenju in rehabilitaciji bolezni srca in ožilja, preventivnih programih za ohranjanje in krepitev zdravja za diabetike in koronarne bolnike ter po rehabilitaciji po infarktih in poškodbah gibalnega sistema.

Center medicinskega velnesa Vitarium Spa & Clinique slovi po celovitem programu storitev za preprečevanje civilizacijskih bolezni, ki so posledica sodobnega načina življenja. Sproščujoči in učinkoviti programi centra so korak na poti k dobremu zdravju, boljšemu počutju, obnavljanju telesne energije, zdravi in estetski zunanosti ter odlični telesni in umski zmogljivosti. Posebnost centra sta programa za razstrupljanje telesa s postom in hujšanje pod zdravniškim nadzorom, ki se ponašata z več kot 10-letnimi učinkovitimi izkušnjami.

Vitarium Aqua je šmarješki svet termalnih bazenov, savn, priljubljenih pilingov, oblog in masaž ter sprostilnih kopeli. Zatočišče, kjer s pomočjo zdravilne termalne vode preobremenjeni sprostijo duha in obnovijo zalogo energije.

V zelenem okolju z blagodejno klimo in zdravilnimi izviri termalne vode je najlažje ohraniti ali spet pridobiti zdravje in voljo do zdravega načina življenja.



## The Šmarješke Toplice Thermal SPA

The Šmarješke Toplice Spa is a modern Slovenian thermal spa, known for its excellent spa services and a choice selection of the most modern medical wellness services, which offer the visitors a chance to escape the fast pace of everyday life. While on holiday, the visitors to the Šmarješke Toplice Thermal Spa can learn about a healthier lifestyle and apply this to their everyday lives.

The spa complex, which also contains the renowned wooden pool constructed above a thermal water spring, is surrounded by numerous walking, hiking and cycling trails. The park, which extends over three hectares, contains ninety different species of trees and shrubs, and provides shelter for 25 species of birds. A special feature of the Šmarješke Toplice park area are the nine marked trails for Nordic walking. There is also a sports park with suitable facilities for playing tennis, football, basketball, volleyball, and miniature golf, a bowling alley and a picnic area.

Another interesting feature of the park is the Indian lotus habitat, which is a botanical rarity on a global scale; in the summer, it covers the surface of a nearby pond with delicate pink flowers.

The Šmarješke Toplice Healthcare Centre is well-known for its effective treatment and rehabilitation of cardiovascular diseases, precautionary programmes for maintaining and enhancing health of diabetics and coronary patients and for rehabilitation following strokes and injuries of the locomotor system.

The medical wellness centre Vitarium Spa & Clinique is known for its comprehensive range of services for the prevention of "civilization diseases", which are the result of the modern lifestyle. These relaxing and effective programmes are a step in the right direction on the path

to good health, improved general well-being, restoration of physical energy, healthy and attractive appearance and excellent physical and mental fitness. The wellness centre also features two programmes for the detoxification of the body by fasting and weight loss under medical supervision with more than 10 years of successful experience.

Vitarium Aqua represents a world of thermal pools, saunas, popular body peels, body wraps, massages and relaxing baths. It is a haven where visitors can refresh their minds with the help of healing thermal water and restore their energy.

Staying in a green environment with a soothing atmosphere and healing thermal springs is the easiest way to maintain or regain your health and the desire to lead a healthy lifestyle.

## Osnovna šola Šmarjeta in Vrtec Sonček

Začetki šolstva v Šmarjeti segajo v leto 1856. Šola je bila na mestu, kjer stoji danes, zgrajena leta 1970. Leta 1990 sta bila šoli dograjena vrtec Sonček in telovadnica. Leta 2014 je bila stavba energetsko sanirana, leta 2015 pa je bil dograjen šestoddelčni vrtec. Notranja površina današnje stavbe je 5.439 m<sup>2</sup>. V šoli se izobražujeta 302 učenca v štirinajstih oddelkih, vrtec pa obiskuje 196 otrok, ki so razporejeni v enajstih oddelkih. Javni zavod zaposluje 68 delavcev (od tega 30 učiteljev, 26 vzgojiteljev v vrtcu, ostalo tehnični kader).

Šola in vrtec obdajajo zelene površine v obsegu 2 hektarjev. Na šolskem dvorišču najdemo manjši park z mlako, naravoslovno učno pot, gabrov in javorjev drevored in površine za igro in sprostitvev otrok – malo nogometno igrišče z umetno travo, veliko nogometno igrišče z atletsko stezo, tri otroška igrišča, rokometno igrišče ...

Osnovna šola Šmarjeta je nosilka več nazivov, ki dajejo šoli status okolju in otrokom prijazne ustanove: EKO šola, Planetu Zemlja prijazna šola, Kulturna šola in Zdrava šola, vrtec pa od leta 2011 nosi naziv EKO vrtec.

Šola je vključena v različne projekte, ki se izvajajo na državni ravni (EKO šolski vrt, Eno globalni dan sajenja dreves, Shema šolskega sadja, Zdrav življenjski slog, Dolenjska ima srce, Turizem in vrtec, Zdravje v vrtcu ...), kot tudi na mednarodni ravni (Erasmus plus).

Otroci so v času učnega procesa vključeni v različne akcije zbiranja odpadnih materialov, kot so zbiranje starega papirja, zbiranje zamaškov, odpadnih kartuš, odsluženih telefonskih in gospodinjstvih aparatov.

Šola in vrtec se redno vključujeta v akcijo Očistimo Slovenijo in akcijo ločenega zbiranja odpadkov. Otroke se navaja na zdravo prehrano lokalnih dobaviteljev. S tem namenom se šola in vrtec vsako leto pridružita akciji Tradicionalni slovenski zajtrk.



## The Šmarjeta Primary school and The Sonček Kindergarten

The beginning of primary-school education in Šmarjeta dates back to 1856. The school in its current location was built in 1970. In 1990, the kindergarten and gymnasium were added to the school building. In 2014, the school complex was renovated for better energy efficiency, and in 2015, facilities for six new class units were added to the kindergarten. The interior surface of the building is 5.439 m<sup>2</sup>.

The school has 302 pupils in fourteen class units, while the kindergarten accommodates 196 children divided into 11 class units. Together the school and kindergarten, which form a single public institution, employ 68 staff members (30 teachers, 26 kindergarten teachers, and the rest are technical staff)

The school and kindergarten are surrounded by 2 hectares of green areas. The schoolyard contains a small park with a pond, a nature trail, beech and maple trees and areas for playing and relaxation – a small football field with artificial grass, a larger football field with an athletics track, three playgrounds, a handball court, etc.

The Šmarjeta Primary school holds several certificates, which give the school the status of an environment and children friendly institution: ECO School, Planet Earth-Friendly School, Cultural School and Healthy School; the kindergarten was awarded the title ECO Kindergarten in 2011.

The school is involved in various projects implemented at the national level (ECO School Garden, ENO Tree Planting Day, School Fruit Scheme, Healthy Lifestyle, Dolenjska Has a Heart, Tourism and Kindergartens, Health in Kindergartens, etc.) and the international level (Erasmus Plus).

The pupils are involved in various campaigns of collecting recyclable waste such as discarded paper, bottle caps, discarded printer cartridges, telephones and household appliances.

The school and kindergarten are regularly involved in the »Let's Clean Up Slovenia« campaign and the campaign for separate collection of waste. The children are also being encouraged to eat healthy organic food from local suppliers. To that end, the school and kindergarten participate every year in the Traditional Slovenian Breakfast project.

## Podjetje Plastoform – največje podjetje v Občini Šmarješke Toplice

Podjetje Plastoform Šmarjeta d. o. o. je največje industrijsko proizvodno podjetje v Občini Šmarješke Toplice in v večini zaposluje lokalno prebivalstvo. Trenutno je v podjetju zaposlenih preko 190 delavcev. Gre za vodilnega evropskega pridelovalca termoformabilnih plastičnih materialov za potrebe vozil za prosti čas, avtomobilske industrije, agrikulture in navtične industrije. Dejavnost podjetja ni moteča za naravno okolje, saj se politika in nadaljnji razvoj podjetja odvijata v smeri okoljske ozaveščenosti. Vsi delovni postopki in procesi tako sledijo aktualnim okoljskim predpisom.

Začetki podjetja Plastoform d. o. o. segajo v leto 1976. V 40 letih uspešnega delovanja so se na podlagi bogatih izkušenj in celovitega pristopa uvrstili med najpomembnejša evropska podjetja za predelavo termoformabilnih plastičnih elementov za različne aplikacije.

Posebnost podjetja je celovito obvladovanje področja, od idejne zasnove do končnega izdelka. Intenzivno investiranje v zadnjih letih skupaj z izkušeno ekipo predstavlja garancijo za dober servis kupcev tudi v bodoče. Tehnološka opremljenost z vrhunsko strojno opremo omogoča realizacijo visoko zastavljenih ciljev. Podjetje ima lastni razvojni oddelek in orodjarno, kar bistveno pripomore k rasti poslovnih rezultatov.

V podjetju Plastoform d. o. o. se zavedajo pomembnosti spremljanja in izpolnjevanja okoljskih zahtev. Trudijo se zagotavljati dolgoročne pogoje za zdravo in kakovostno delovno ter bivalno okolje. Delovni postopki in procesi dela ustrezajo okoljskim predpisom in smernicam. V podjetju aktivno skrbijo za ločeno zbiranje odpadkov, gospodarno ravnanje z energijo in surovinami ter uporabljajo okolju prijazne materiale. Za čisto in urejeno okolje tako skrbijo vsi zaposleni na vseh oddelkih podjetja. Z energijo, ki jo ustvarja proizvodni proces, se hkrati ogrevajo tudi proizvodni prostori.

Vodstvo podjetja razmišlja globalno in dolgoročno. V podjetju stremijo k neprestanemu izkoriščanju novih priložnosti ter konstantni rasti in razvoju. Njihovo osnovno poslanstvo je, da jih zadovoljni kupci prepoznajo kot enega izmed pomembnih strateških partnerjev.



## Plastoform – the largest company in the Municipality of Šmarješke Toplice

Plastoform Šmarjeta d.o.o. is the largest industrial manufacturing company in the municipality and mostly provides employment for the local population. Currently, the company employs over 190 workers. It is one of the leading European manufacturers of thermoformable plastic materials for the leisure vehicle industry, the automotive industry, the agribusiness and the boating industry. The company's activities are not disruptive to the natural environment as the policy and future development of the company are moving in the direction of environmental awareness. All working procedures and processes are thus in line with the current environmental regulations.

The beginnings of Plastoform d.o.o. date back to 1976. In the 40 years of successful operations, based on extensive experience and a comprehensive approach, they have become one of the top European companies for processing thermoformable plastic components for various applications.

The company's speciality is the comprehensive management of their business, from concept to finished product. Their substantial investments in recent years and having an experienced team is a guarantee for good customer service in the future. The technological equipment and top-of-the-range mechanical equipment enables them to fulfil their ambitious goals. The company has its own development department and tool shop, which significantly contributes to the improvement of business results.

Plastoform d.o.o. is well aware of the importance of monitoring and complying with environmental requirements. They provide long-term conditions for healthy and high-quality working and living conditions.

Working procedures and processes are in compliance with environmental regulations and guidelines. The company makes arrangements for separate collection of waste, ensures efficient use of energy and raw materials and uses environmentally friendly materials. It is up to all the employees in all departments of the company to provide a clean and safe working environment. The energy generated during the production process is used to provide central heating to the production facilities.

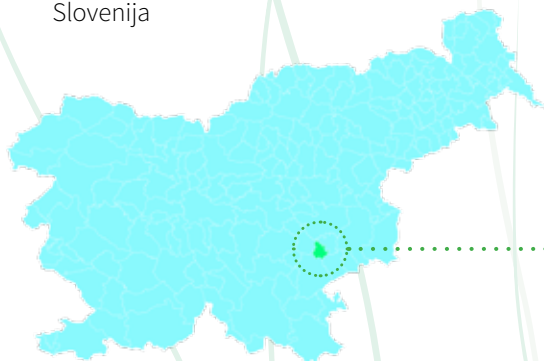
The company management has a global and long-term vision for the company. The company constantly strives to seize new opportunities, and to provide constant growth and development. Their primary mission is to have their satisfied customers identify them as one of their most important strategic partners.



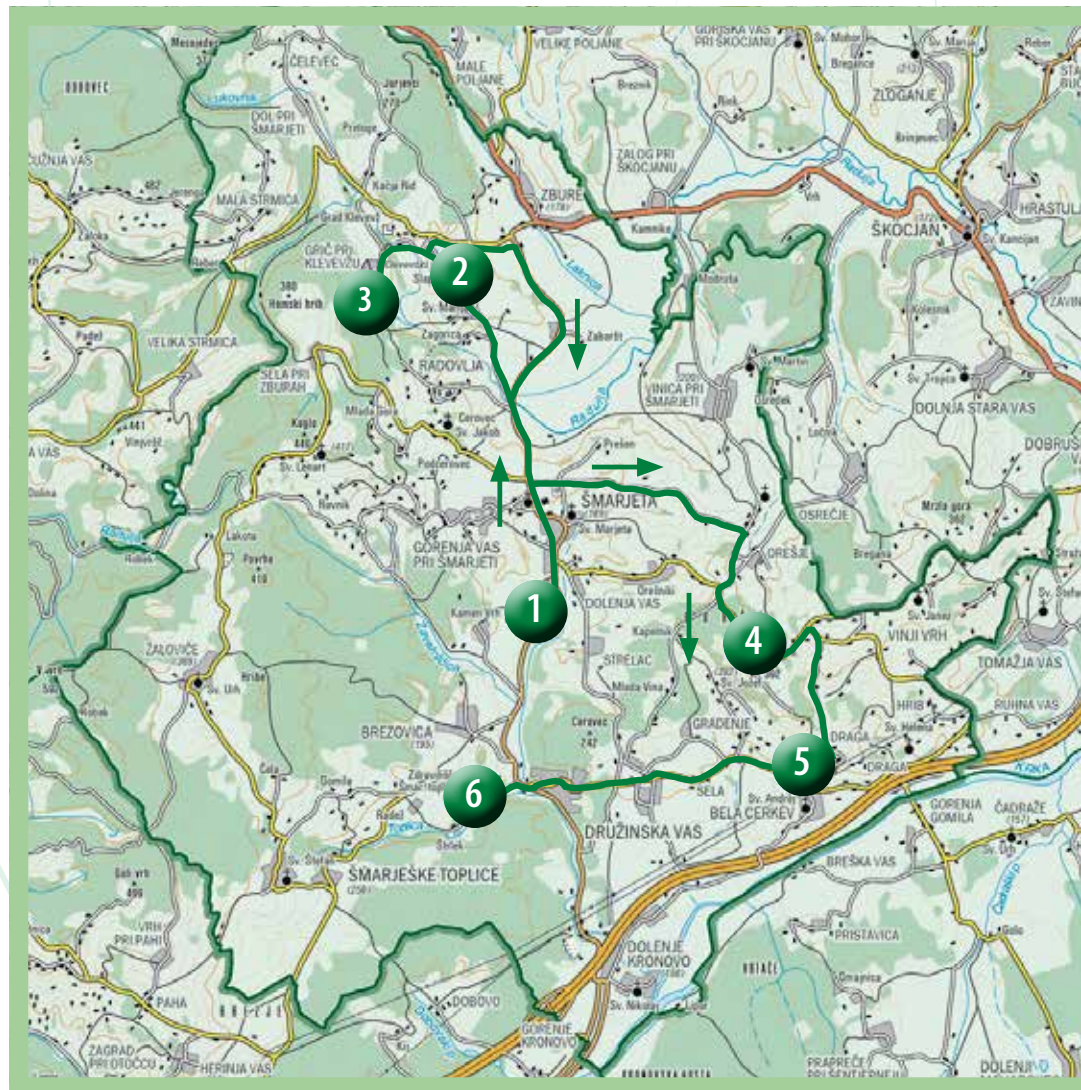
Občina  
Šmarješke Toplice

## Pot obiska kraja Šmarješke Toplice Travel path of Šmarješke Toplice

Slovenija



Občina Šmarješke Toplice  
Municipality Šmarješke Toplice



1. Osnovna šola Šmarjeta in vrtec Sonček / Elementary school Šmarjeta and Kindergarten Sonček
2. Pokopališče ob cerkvi Karmelske Matere Božje v Slapih / Cemetery and Church of Carmelite Mother of God
3. Naravna znamenitost Klevevž / Natural Site in Klevevž
4. Vinji vrh in cerkev sv. Jožefa / Vinji vrh and Church of St. Joseph
5. Bela Cerkev in Hiša žive dediščine / Bela Cerkev with House of the Living Heritage
6. Terme Šmarješke Toplice in botanična pot / Spa Šmarješke Toplice and Botanical garden trail

*Dobrodošli*  
*v Šmarjeških Toplicah*  
*Welcome*  
*to Šmarješke Toplice*

