



Entente Florale 2017



DUCHROTH

VILLAGE OF VINES AND ROSES

INTRODUCING OURSELVES AND OUR VISION



Our village of approximately 570 inhabitants is situated in the wine growing region of the Nahe Valley. The community is committed to protecting the present character of our village and save it from inappropriate or wrong development. We no longer want to expand into our beautiful landscape and therefore our slogan is:

“Our new building area is the village centre!”

In the early nineties, many buildings were empty in the centre of the village and there were mainly only older people living in the houses to be renovated. During this time we started with our village renewal and discovered our true potential!

We are not a rich community in the financial sense –
but we are rich in cheerful, helpful people
who can tackle anything for their community.

What our village offers:

- ❖ 570 inhabitants
- ❖ 13 farms, of which 6 are wholesalers in viticulture
- ❖ 1 traditional German restaurant with a seasonal wine-garden
- ❖ Several lodging-options incl. vacation rentals and private rooms
- ❖ Village store with a bakery
- ❖ Butcher's Shop
- ❖ Distribution service for regional produced products (Soonwald-Nahe)
- ❖ Winery and wine trader
- ❖ Tailor
- ❖ Antiquarian
- ❖ Real estate service
- ❖ Financial consultant
- ❖ Debt collecting agency
- ❖ Craftsman for flooring
- ❖ Computer and software service and package-shop
- ❖ Fruit sales
- ❖ Sheep farming with mutton sales
- ❖ Schnaps Distillery
- ❖ Horticulture planning office
- ❖ Horticulture and scenic landscaping company
- ❖ Fruit import and export society
- ❖ Machine construction company
- ❖ District chimney sweep
- ❖ Shoemaker
- ❖ Locksmith
- ❖ Insurance agency
- and much more!



LANDSCAPE AND NATURE - OUR BIGGEST OPPORTUNITIES



About 300 million years ago where Duchroth is situated today, volcanic activities broke through old sediment-layers -

- forming an unique mixture of extremely diverse soils resulting in and a rugged and beautiful topography.



Expert guided tours
all seasons



Moderate tourism
preserves nature



Old vineyard walls
as dry biotopes



Landscaping by grazing
with sheep and goats

Segelfalter (*Iphiclides podalirius*)

Purpurorchis (*Orchis purpurea*)



Bocksriemenzunge (*Himantoglossum hircinum*)

Kleiner gelber Fingerhut (*Digitalis lutea*)

Mauereidechse (*Podarcis muralis*)

Smaragdeidechse (*Lacerta bilineata*)

Staudenlein (*Linum perenne*)

Apothekerfarn (*Asplenium ceterach*)

Küchenschelle (*Pulsatilla vulgaris*)

Weißer Waldportier (*Brintesia circe*)

ZIPPAMMER (*EMBERIZA CIA*)

ährlige Graslilie (*Anthericum liliago*)

Glattnatter (*Coronella austriaca*)

Alpen-Johannisbeere (*Ribes alpinum*)

Steinweichsel (*Prunus mahaleb*)

Wiesensalbei (*Salvia pratensis*)



The area is protected by the surrounding mountains up to 800 meters above sea level which create a climate with warm temperatures and low rainfall (less than 500 mm/a). Under these conditions well adapted plant-societies together with a wide range of species of rare insects and amphibians were able to develop.

The special significance of this location is based on the variety of rocks and sediments, rhyolitic conglomerates as well as rare intermediate volcanism and andesite, together with the south-southwestern exposure.

Flügelginster (*Genista sagittalis*)



Glattnatter (*Coronella austriaca*)



Segelfalter
(*Iphiclides podalirius*)



PROTECTING AND PROMOTING BIODIVERSITY



- ❖ Dry – warm grasslands dotted with Steinweichsel (*Prunus mahaleb*)
- ❖ Natural rock-structures and gravel fields
- ❖ Ancient “Trockenmauern” (dry walls) , originally for terracing vineyards
- ❖ Direct neighbourhood of dry-warm biotopes with little streams and springs
- ❖ About 300 hectare of dry land forest, generously dotted with rare noble woods like wild cherries, chestnuts, old oaks and beeches, sorbus and maples



For hundreds of years the rich biodiversity around Duchroth had survived; but now it is threatened by modern technologies and by the end of small scale farming. Because of its high value and rare biodiversity, this region of the Nahe Valley was defined as one of 30 hotspots of biodiversity in Germany. From 2002 to 2006 an EU-LIFE project on top of the “Gangelsberg” was established. This helped now local people to realise what rich natural treasures are laying in front of their doorstep. Subsequently, the local initiative called “KULD” (Kultur Und Landschaft Duchroth) was founded.

Purpurorchis (*Orchis purpurea*)
und Bocksriemenzunge
(*Himantoglossum hircinum*)

The local initiative “KULD”
aims the following goals:

- Taking care of this unique biodiversity
- Educating people in nature conservation
- Showing people from abroad this unique landscape, thus developing a moderate tourism
- Promoting an environmentally friendly land use (agriculture – viniculture – forestry)
- sensible use of the natural resources
- Combining art and landscape
- Promoting the biodiversity of the dry grasslands by annual voluntary landscape-care-work
- The annual program of KULD reflects these activities.

Steppen-Sattelschrecke
(*Ephippiger ephippiger*)

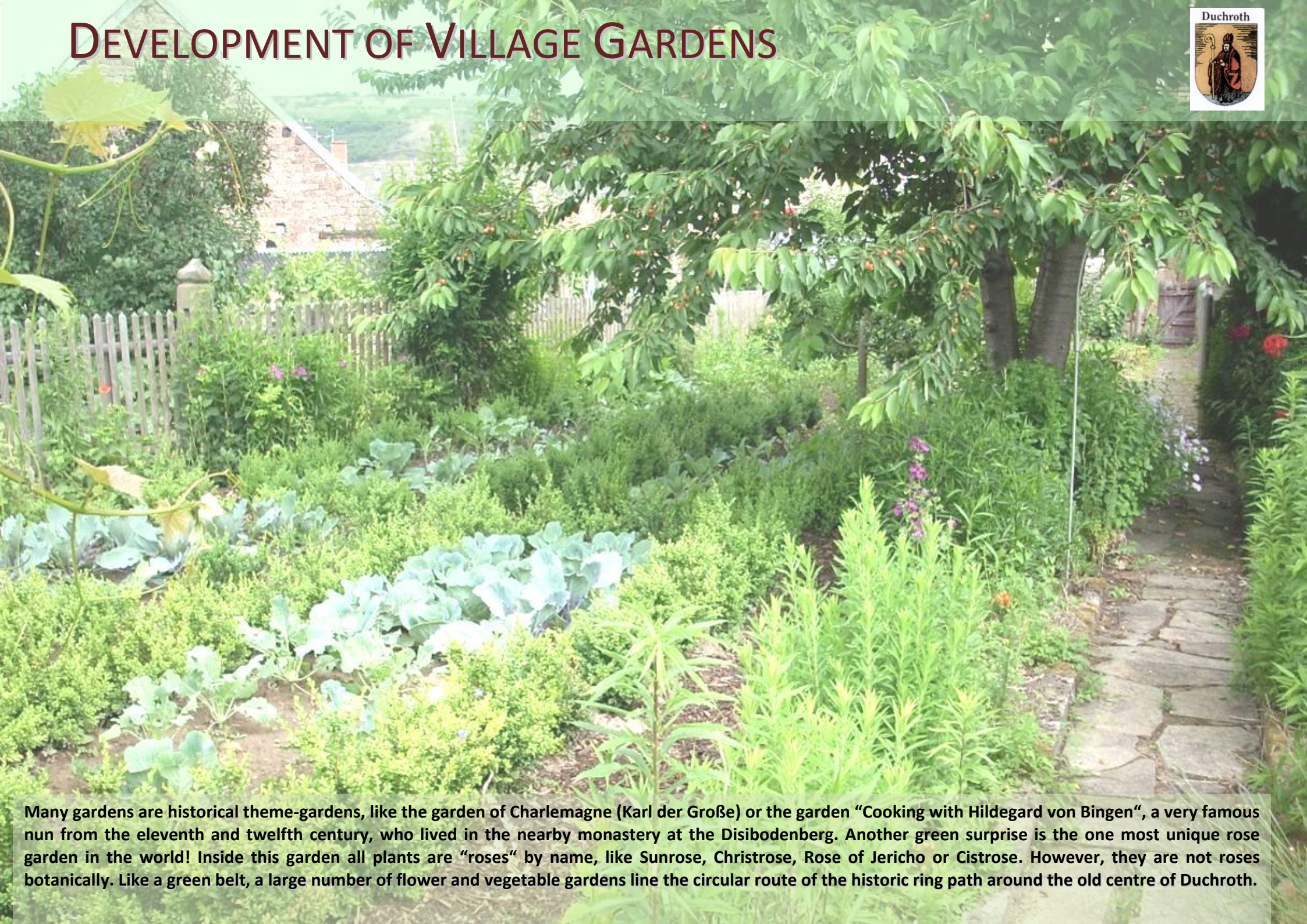


Through another private initiative an additional project is initiated. The aim is to restore and conserve a biotope mosaic consisting of rock structures, dry-stone walls, shrubs with dry lawns and warmth-loving dry bushes to improve and sustain biodiversity as well as to push back bushes whose growth threatens rare species. This long-term project will officially be managed by the community and two environmentally active organisations. Monitoring will happen through an established landscaping office with the main financial support coming from the state of Rheinland-Pfalz.



Smaragdeidechse
(*Lacerta bilineata*)

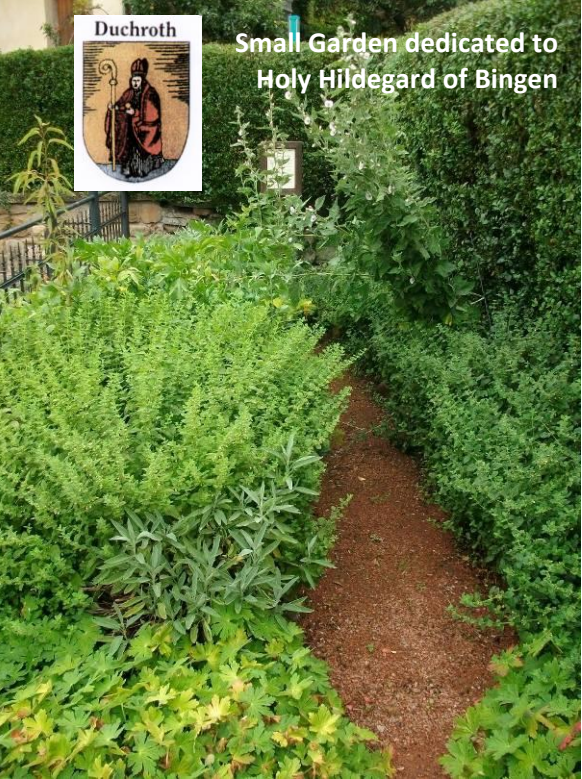
DEVELOPMENT OF VILLAGE GARDENS



Many gardens are historical theme-gardens, like the garden of Charlemagne (Karl der Große) or the garden "Cooking with Hildegard von Bingen", a very famous nun from the eleventh and twelfth century, who lived in the nearby monastery at the Disibodenberg. Another green surprise is the one most unique rose garden in the world! Inside this garden all plants are "roses" by name, like Sunrose, Christrose, Rose of Jericho or Cistrose. However, they are not roses botanically. Like a green belt, a large number of flower and vegetable gardens line the circular route of the historic ring path around the old centre of Duchroth.



Small Garden dedicated to
Holy Hildegard of Bingen



Duchroth is characterized by an unusually high number of green areas and gardens, thus it carries the epithet „village of vines and roses“. Nearly every house front is decorated with a rose plant. Vines grow on high gates over the streets. Small beds showcase selected plants, for instance special oil plants or historical plants which traditionally had been used to produce colors. Other beds are planted with herbs like Thyme, Minces, Hyssop and Salvia.



“Pavement-Garden”



Typical garden-entrance



Old village-fountain

VILLAGE WITHIN NATURE – NATURE WITHIN THE VILLAGE



Big old trees grow in several areas like the Church meadow, the sports ground or the graveyard. Since 2012 almond trees also grow in Duchroth. Owing to climate change it is warm enough to plant them and they bear abundant fruit.

A special kind of planting unique to Duchroth are the “opened pavements”. These pavements are very narrow, so cars cannot park and people cannot walk there. These areas are called “pavement gardens” and they are adored by everybody who visits our village.

Special
wall-vegetation



Many protected and very rare plants (Red List of Germany) still grow in and around Duchroth. For instance the so called Andorn (*Marrubium vulgare*), a plant which has died out in Rhineland-Palatinate, can still be found in Duchroth, making our village one of the 30 hotspots of Biodiversity in Germany.

Green courtyard



Artificial swallow nests



Duchroth has been reintroducing ancient fruit trees and wild berries back into the village gardens. For instance, in 2016 growers and gardeners began to cultivate Saffron, the most expensive spice in the world.

"Insect-Hotel"

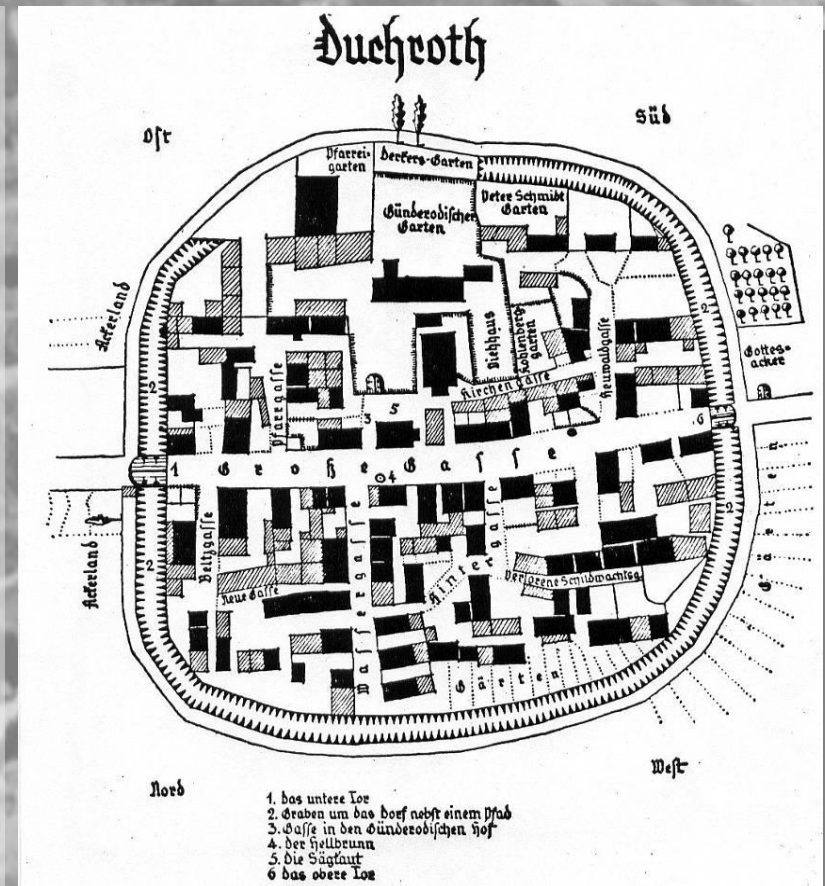


Wild roses and Damaszener-roses grow along the graveyard. In the upcoming years the graveyard will be transformed into a countryside park preserving the graves.

VILLAGE STRUCTURE - CONTINUITY FROM HISTORY



Duchroth has the typical structure of a so called North Palatinate "Kamm-Haufen-Dorf" (comb heap village). During the Middle Ages, the main road connected the only two gates leading into the village. All other streets branched off from the main road into dead ends, making the village look like a comb when seen from above. In the village center, all properties were heaped together as U-shaped or L-shaped farmhouses, with driveways facing the street and small courtyards and barns in the back. A medieval fortification framed the village, consisting of a narrow path, a deep moat and a dense thorn-hedge. Until the 1960s the primary water supply was secured by a large number of public and private wells. Today about 80 of them still exist.



Historical village-map from 1798 as drawn by Johann Eimann (1764 -1847), a famous Duchroth-born Batschka colonist.



In 1992 the municipality in Duchroth decided to create a village restoration conception inspired by an exhibition of old photos. The pictures emphasized the beauty and the nostalgic atmosphere of the old streets and houses in contrast to what had been destroyed by roadwork, modern sewer and water supply. The restoration project began with a survey showing that due to structural changes in agriculture about 50% of the buildings in the village- centre stood empty, mostly barns and stables.

To preserve and revitalize these buildings, the decision was made against the development of new residential areas outside the village but in favor of young families, winemakers and craftsmen to move into the old village centre. To describe this strategy, the municipality invented the slogan "Our new building area is the old village centre ". Fortunately, several young builders were interested and once the first successful restoration examples were completed the concept perpetuated and the process continues until today.



ARCHITECTURE – LIVING IN HISTORICAL SURROUNDINGS



Since village planning and design were at the core of the renovation concept, an intensive consultation with the builders was the key to success. With their help inadequate and untypical development in the village center was gradually corrected. Additionally, renovating and modernizing the typical half-timbered, stone and brick buildings had a very positive effect on the overall look as well as on the public image of our village.

Supported by programs like the Cadastral Regulation, Duchroth has become an idyllic and livable village with a healthy age distribution and good infrastructure. Despite a very limited financial situation the municipality is setting good examples in the public sector. A number of public projects have been realized with an enormous amount of volunteer engagement. For instance the historic ring path, Duchroth's most important tourist attraction was redesigned. The reopening of an historic pond, the redesign of an old bus station, reactivation of a village well and the modernizing reconstruction of the village gates followed.


Situation in 1992, the beginning of the renewal program:

 Empty or hardly used buildings

 Vacant lots in the center

 People interested in project

 Planned commercial projects

 The result after 25 years:
Over 40 vacant barns and stables were converted into living quarters, wine taverns, guest rooms or vacation homes by private builders.

The largest current project is the transformation of an old farmhouse into a public meeting point and art house. The inauguration of this "Haus Schumacher" in 2016 just like the project itself was realized with a maximum amount of voluntary community engagement, allowing a minimum burden on the municipal budget. Other renovation and design activities are in preparation and the community continues to make exemplary progress.



ART AND CULTURE - NEW PATHS FOR THE VILLAGE LIFE

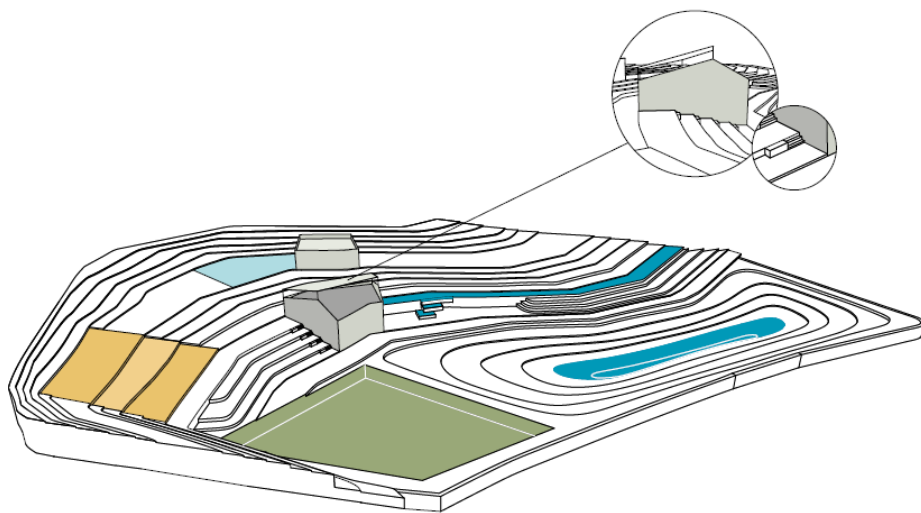


The project „Landscape - Art In, Around & With Duchroth" was created by Peter Baum. After his death the project continued with new ideas, promising further exciting and innovative art designs supported by professors and artists from the Hochschule für Gestaltung, HfG (College of Design) in Offenbach am Main. A few examples are "Reading Stairway" in the village center, the "Table on the Gangelsberg" and the "Fish over the Vineyards". They and many more were all met with great interest from the surrounding communities and from local art lovers.



The Peter-Baum-Table on the plateau of the "Gangelsberg", a huge sandstone table, has become one of the most popular outdoor destinations in the region. It serves as an event location for wine tastings, as a picnic area, as a stage for readings or musical performances and can be used for other creative ideas.

Example of landscape design with retention basin



IntraRegio, Grün+, Julia Huisken, 07.02.2017

One of the most recent student projects was to design the landscape during the renaturation of a local creek called Hettenbach. The new design calls for a large retention basin to protect against floods. The answer however is not to build an ugly facility. On the contrary, our goal is to find many small creative solutions, which can be integrated into the landscape enriching the village life and preserving the natural beauty rather than creating an eyesore.

The collaboration with artists and students has become a great success story for Duchroth. In all public projects, the village benefits from youthful creativity and progressive ideas.

Students and artists also benefit from this collaboration. The community provides them with a warm welcome, food and accommodations while they work at their projects.

Through this new kind of cooperative projects Duchroth has gained a lot of attention and has become an attractive meeting point for a whole new clientele.

Now art lovers come here to taste and buy wine and some are even interested in buying a house and living in our creative community.

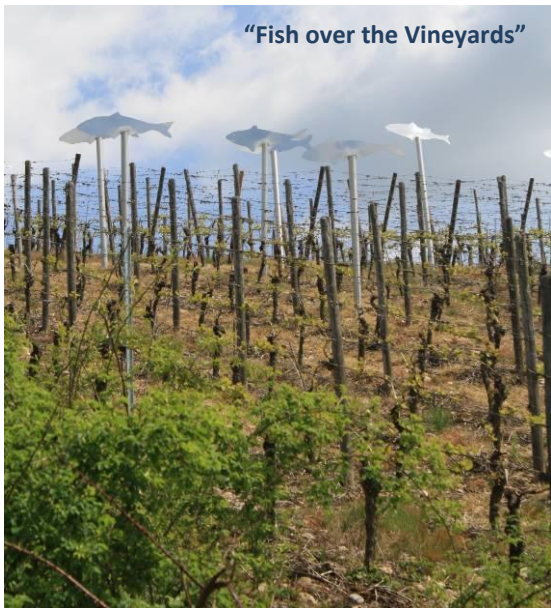


Artwork "23 April" - every inhabitant preserves his most important experiences on this day in a reaction glass

Art-Exhibition in Haus Schumacher - an old farmhouse converted into an artist's house and village-meeting point



"Fish over the Vineyards"



"Ornaments"



Art-action "Campfire" with artists and locals



Furniture designs for the Haus Schumacher



landschaft
kunst in, um & mit duchroth.

Visit of the Environment Minister in Haus Schumacher after awarding the Environment-Prize





SOCIAL ENGAGEMENT – A VILLAGE FOR ALL GENERATIONS

Living in Duchroth is beautiful. It is exciting and relaxing, versatile and creative but most of all livable for and appealing to all generations. To maintain this culture and ensure it's growth in the future the community is constantly developing new ideas with the involvement and engagement of its citizens in every decision.





Children's entertainment during village events



Demonstration by the village population on land use by new construction areas – there will be no more in Duchroth

Social groups and clubs in Duchroth:

- ❖ **"TuS 1910 Duchroth"** with approx. 280 members - sports club with a great leisure offer
- ❖ **Association "KuLD"** with about 100 members, committed to art-culture-nature
- ❖ **"Landfrauenverein"** local women club participating and supporting all local events
- ❖ **Evangelical church community** offering social and cultural projects for all generations
- ❖ **Voluntary fire brigade** cares for all playgrounds, the children's summer festival and St.Martin-event
- ❖ **Association "Action Areas"** promoting youth projects
- ❖ **"Angelerverein Frühauf"** committed to nature conservation and clean keeping of waters
- ❖ **Volksbildungswerk** - rich offer of courses and lectures
- ❖ **Working group village history** elaboration and presentation of historical topics
- ❖ **Duchroth Foundation** - Promotion of Public Projects and many more

There is something for everyone and everybody appreciates and supports the amazing variety of offers



Large participation of the inhabitants in hiking events of the association KuLD

Our people, especially our children are our most valuable treasure. We strongly encourage them to voice their opinion and be actively involved in our village life. A great example is our participation in a state project called "Spilleitplanung" supported by the state of Rheinland-Pfalz. This future-oriented program provided a planning tool to create a child-friendly and family-friendly community. The key was to collect and visualize our children's ideas so that we can implement them in our future projects. Generally, kids in Duchroth have access to both - a traditional and a natural playground. In addition, plenty of social activities, sporting events, clubs and gatherings make Duchroth a wonderful place to raise a family.



Children are planting and conserving nature



The entire village community is involved in the wine festival parade in September with several thousands of visitors



Creative table-exchange-action of an artist with the Duchroth table-exchange-rap

Dearest reader, we hope this brochure has informed you about our village. But we cannot wait for you to see all this and more when you visit us in person. We look forward to proudly share and present all that Duchroth has to offer! We are excited to say...

Herzlich Willkommen!

WELCOME!

Üdvözlünk!

Vítejte!

Welkom!

Bienvenue!

Fáilte!

Dobrodošli!

Benvenuto!

